

# YK700~1000XS

Ceiling-hanging Type

Inverse Type

Arm length 700•800•1000mm/Maximum payload 20kg

## Robot ordering method

**YK800XS - 200 - 3L - RCX142 - E - R - N1 - CC - S**

**Model**

**Z axis stroke**  
 200:200mm  
 400:400mm

**Cable length**  
 3L:3.5m  
 5L:5m  
 10L:10m

**Controller**

**CE** Regenerative control:RGU2  
**Expansion I/O**  
**Network**  
**Battery**

Controller type: Refer to the Controller Catalog for further details.

\* Built-to-order product. Contact us for the delivery period.

## Basic specifications

Model		YK700XS	YK800XS	YK1000XS
Axis specifications	X axis	Arm length	350mm	450mm
		Rotation range	± 120°	
	Y axis	Arm length	350mm	450mm
		Rotation range	± 145°	
	Z axis	Stroke	200mm, 400mm	
R axis	Rotation range	± 180°		
Motor	X axis	800W		
	Y axis	400W		
	Z axis	400W		
	R axis	200W		
Maximum speed	X, Y combined	6.7m / s	7.3m / s	8.0m / s
	Z axis	1.7m / s		
	R axis	600° / s		
Repeatability*1	X, Y axis	± 0.02mm		
	Z axis	± 0.01mm		
	R axis	± 0.005°		
Max. payload		20kg		
Standard cycle time (with 2kg payload)		0.57 sec.		0.60 sec.
R axis allowable moment inertia*2		0.314kgm <sup>2</sup> (3.2kgfcm <sup>2</sup> )		
User wiring		0.2sq × 20 wires		
User tubing		ø6 × 3		
Movement limit setting		1. Soft limit, 2. Mechanical limit (X, Y, Z axes)		
Robot cable		Standard 3.5m Option: 5m, 10m		
Controller, Power supply capacity		RCX142-R, 2000VA		
Weight		56kg	57kg	58kg

\*1: This is the value at a constant ambient temperature. (X, Y axes)

\*2: There are limits to the setting of the acceleration coefficient.

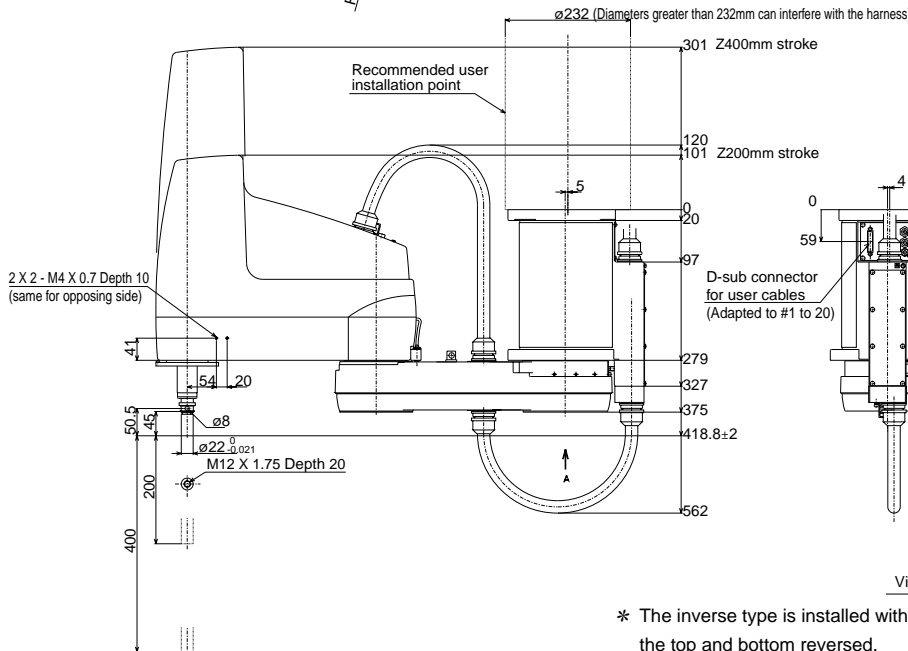
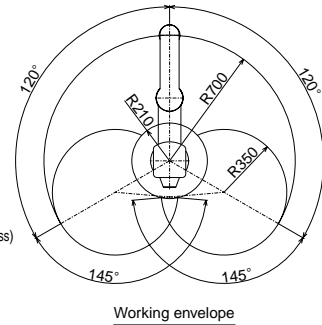
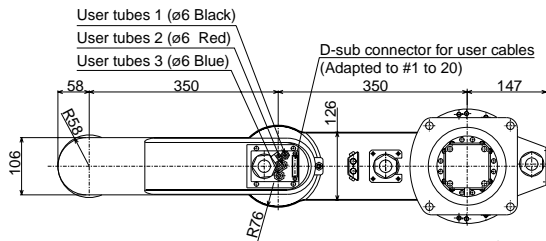


YK800XS (ceiling-hanging)



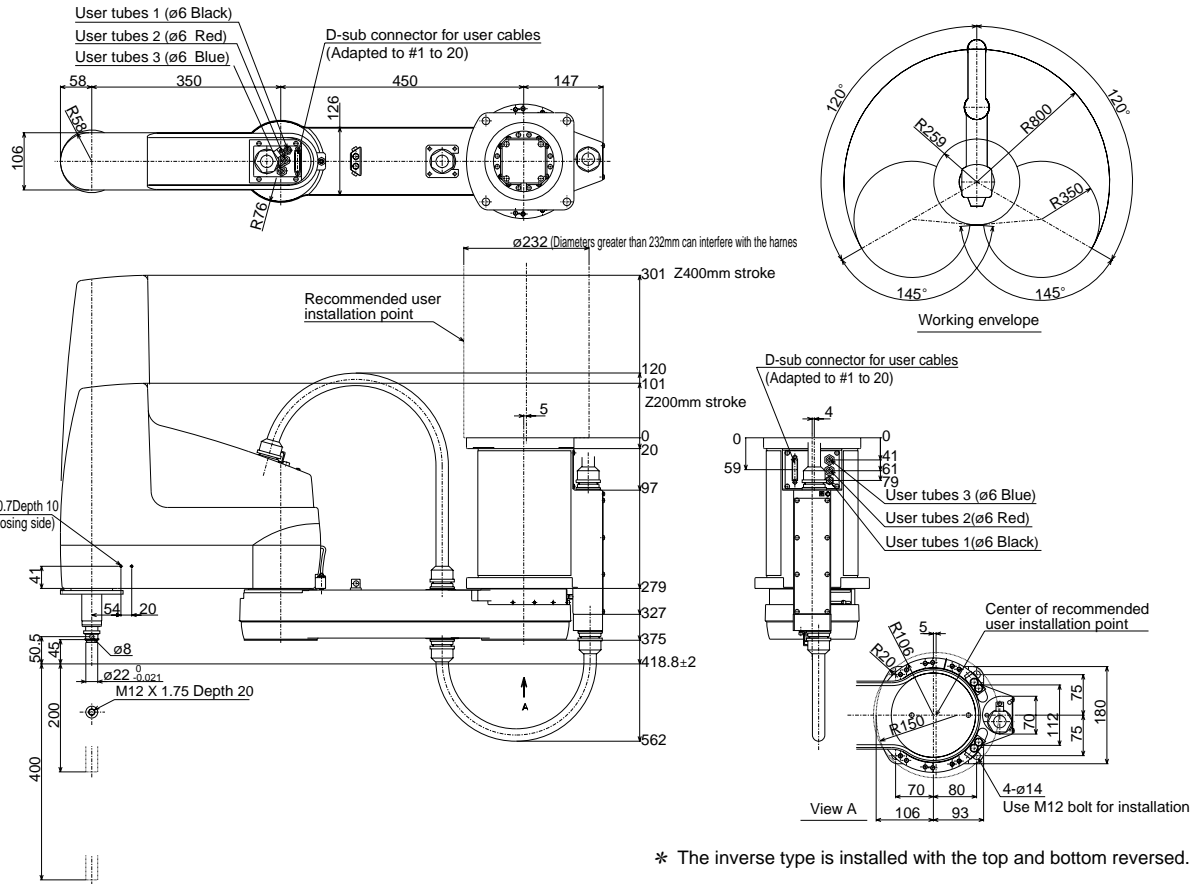
YK800XS (inverse)

## YK700XS



\* The inverse type is installed with the top and bottom reversed.

# YK800XS



# YK1000XS

