

YK700~1000XP

Dust-proof & drip proof Type

Arm length 700•800•1000mm/Maximum payload 20kg

Robot ordering method

YK700XP - 200 - 3L - 1000 Model	Z axis stroke - 200:200mm - 400:400mm	Cable length - 3L:3.5m - 5L:5m - 10L:10m	RCX142 - E - R - N1 - CC - S				
			Controller	CE	Regenerative control:RGU2	Expansion I/O	Network
			Blank:Standard E:CE specification				

Controller type: Refer to the Controller Catalog for further details.

* Built-to-order product. Contact us for the delivery period.

Basic specifications

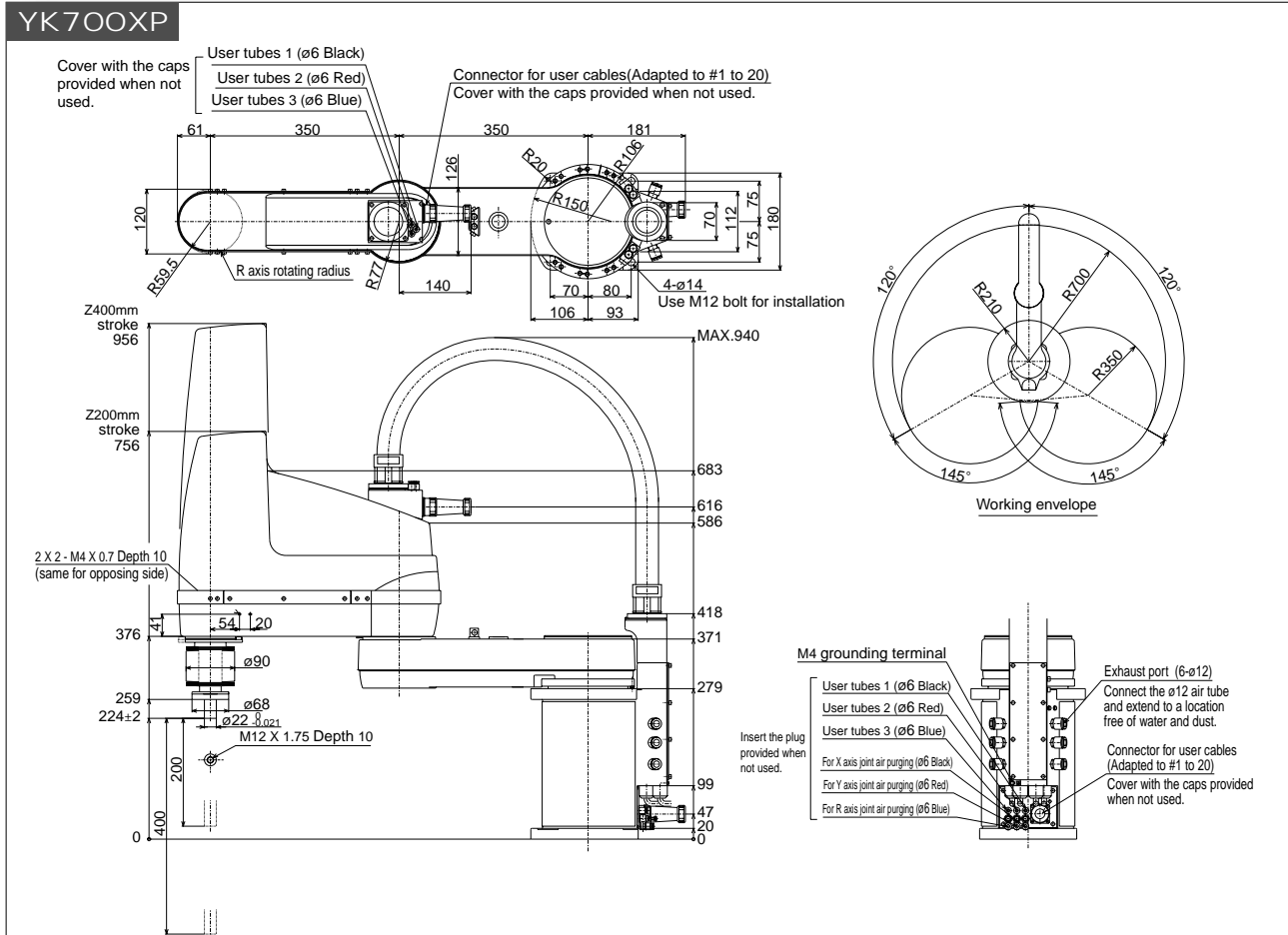
Model		YK700XP	YK800XP	YK1000XP	
Axis specifications	X axis	Arm length	350mm	450mm	550mm
		Rotation range	± 120°		
	Y axis	Arm length	350mm		450mm
		Rotation range	± 145°		
	Z axis	Stroke	200mm, 400mm		
R axis	Rotation range	± 180°			
Motor	X axis	800W			
	Y axis	400W			
	Z axis	400W			
	R axis	200W			
Maximum speed	X, Y combined	6.7m / s	7.3m / s	8.0m / s	
	Z axis	1.7m / s			
	R axis	600° / s			
Repeatability*1	X, Y axis	± 0.02mm			
	Z axis	± 0.01mm			
	R axis	± 0.005°			
Max. payload		20kg			
Standard cycle time (with 2kg payload)		0.57 sec.		0.60 sec.	
R axis allowable moment inertia*2		0.314kgm ² (3.2kgfcm ²)			
User wiring		0.2sq × 20 wires			
User tubing		ø6 × 3			
Movement limit setting		1. Soft limit, 2. Mechanical limit (X, Y, Z axes)			
Robot cable		Standard 3.5m Option: 5m, 10m			
Controller, Power supply capacity		RCX142-R, 2000VA			
Weight		56kg	57kg	58kg	

*1: This is the value at a constant ambient temperature. (X, Y axes)

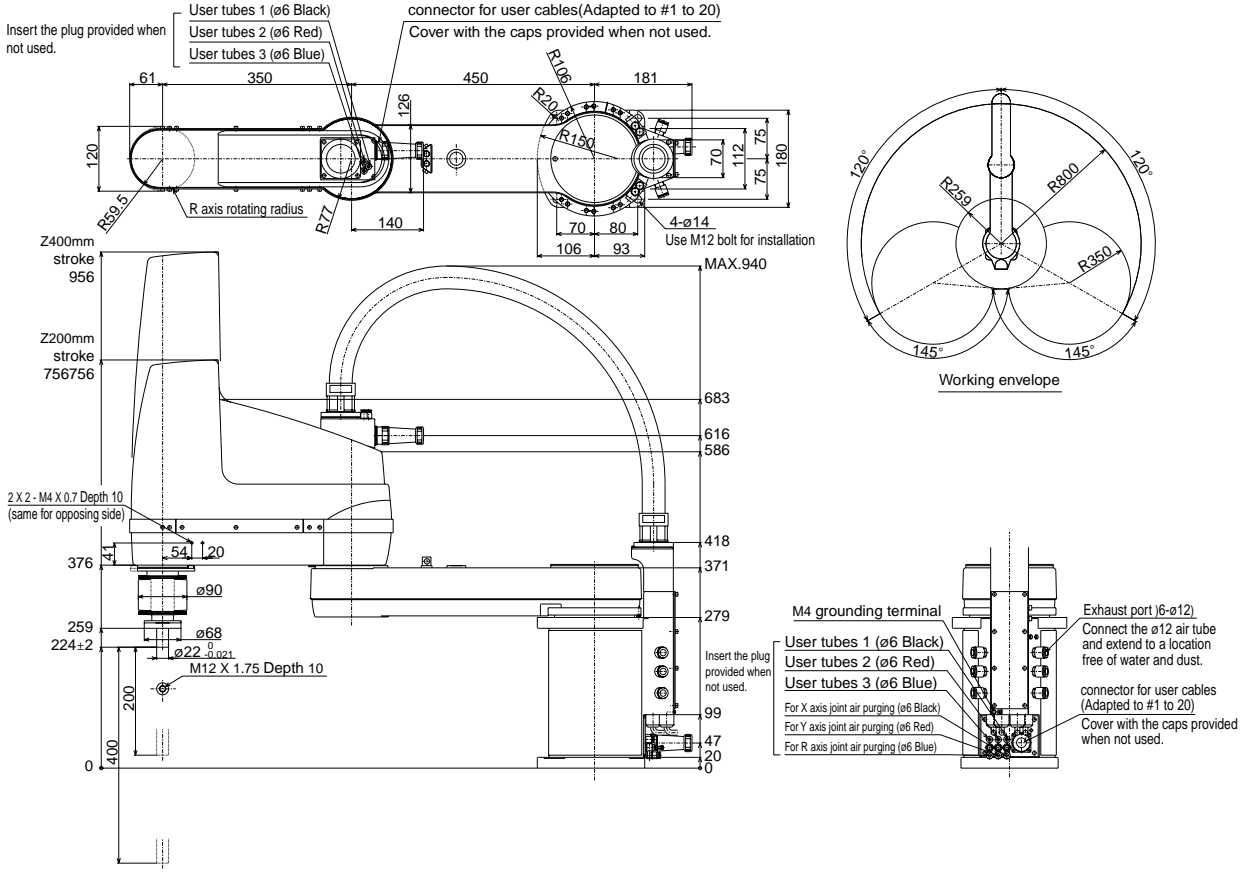
*2: There are limits to the setting of the acceleration coefficient.



YK700XP



YK800XP



YK1000XP

