

YK700~1000XC

Clean Type

Arm length 700•800•1000mm/Maximum payload 20kg

Robot ordering method

YK700XC - 200 - 3L - RCX142 - E - R - N1 - CC - S

Model: YK700XC, 800, 1000

Z axis stroke: 200:200mm, 400:400mm

Cable length: 3L:3.5m, 5L:5m, 10L:10m

Controller: RCX142

CE: Regenerative control:RGU2, Expansion I/O, Network, Battery

Blank: Standard, E.CE specification

Controller type: Refer to the Controller Catalog for further details.

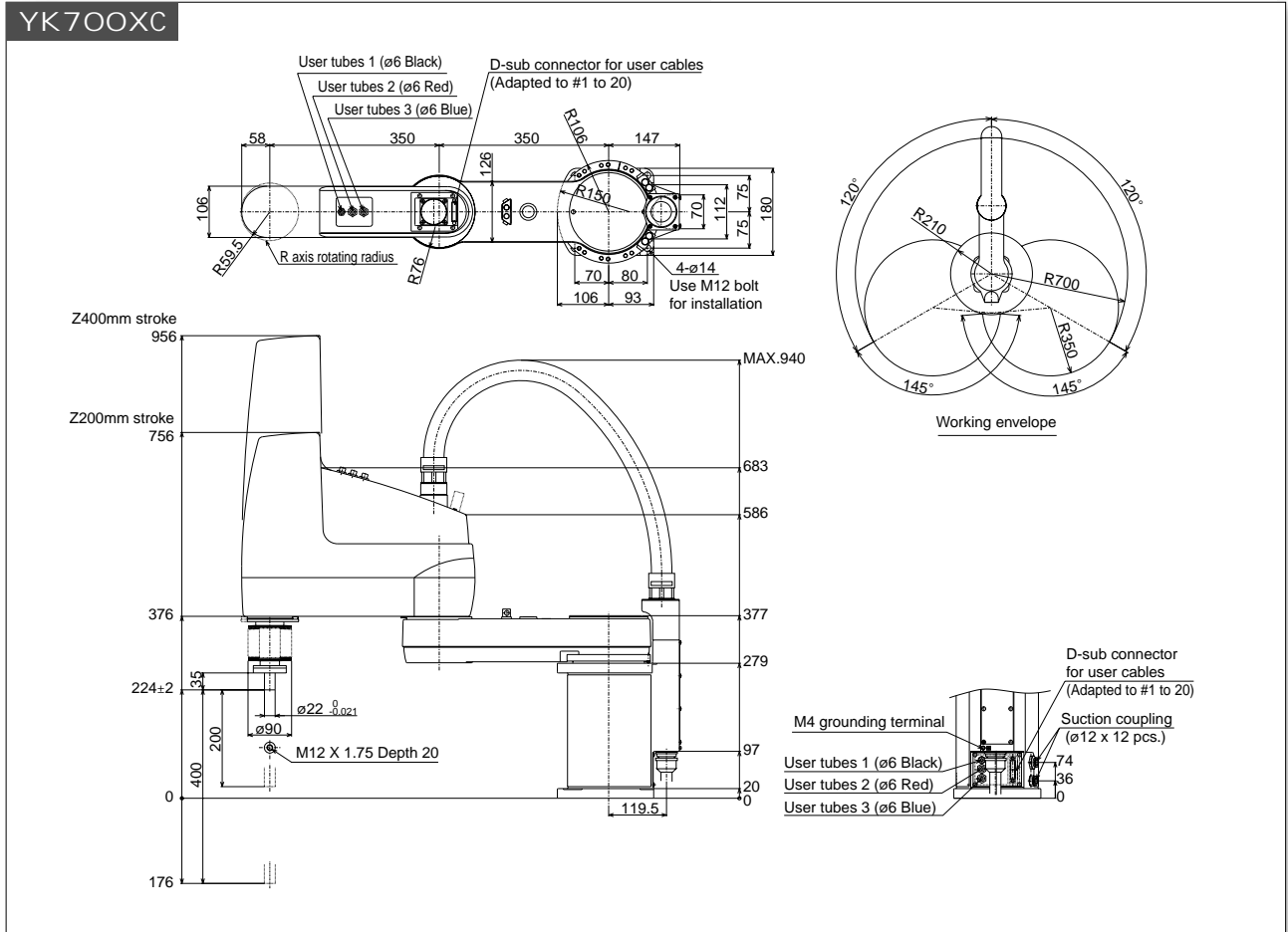
Basic specifications

Model		YK700XC	YK800XC	YK1000XC
Axis specifications	X axis	Arm length	350mm	450mm
		Rotation range	± 120°	
	Y axis	Arm length	350mm	450mm
		Rotation range	± 145°	
Z axis	Stroke	200mm, 400mm		
R axis	Rotation range	± 180°		
Motor	X axis	800W		
	Y axis	400W		
	Z axis	400W		
	R axis	200W		
Maximum speed	X, Y combined	6.7m / s	7.3m / s	8.0m / s
	Z axis	1.7m / s		
	R axis	600° / s		
	Repeatability*1	± 0.02mm		
Repeatability*1	Z axis	± 0.01mm		
	R axis	± 0.005°		
	Max. payload	20kg		
	Standard cycle time (with 2kg payload)	0.57 sec.		0.60 sec.
R axis allowable moment inertia*2	0.314kgm ² (3.2kgfcm ²)			
User wiring	0.2sq × 20 wires			
User tubing	ø6 × 3			
Movement limit setting	1. Soft limit, 2. Mechanical stopper (X, Y, Z axes)			
Robot cable	Standard 3.5m Option: 5m, 10m			
Controller, Power supply capacity	RCX142-R, 2000VA			
Weight	57kg	58kg	59kg	
Cleanliness (0.1µm base)	Class10			
Suction volume (Nl/min)	60			

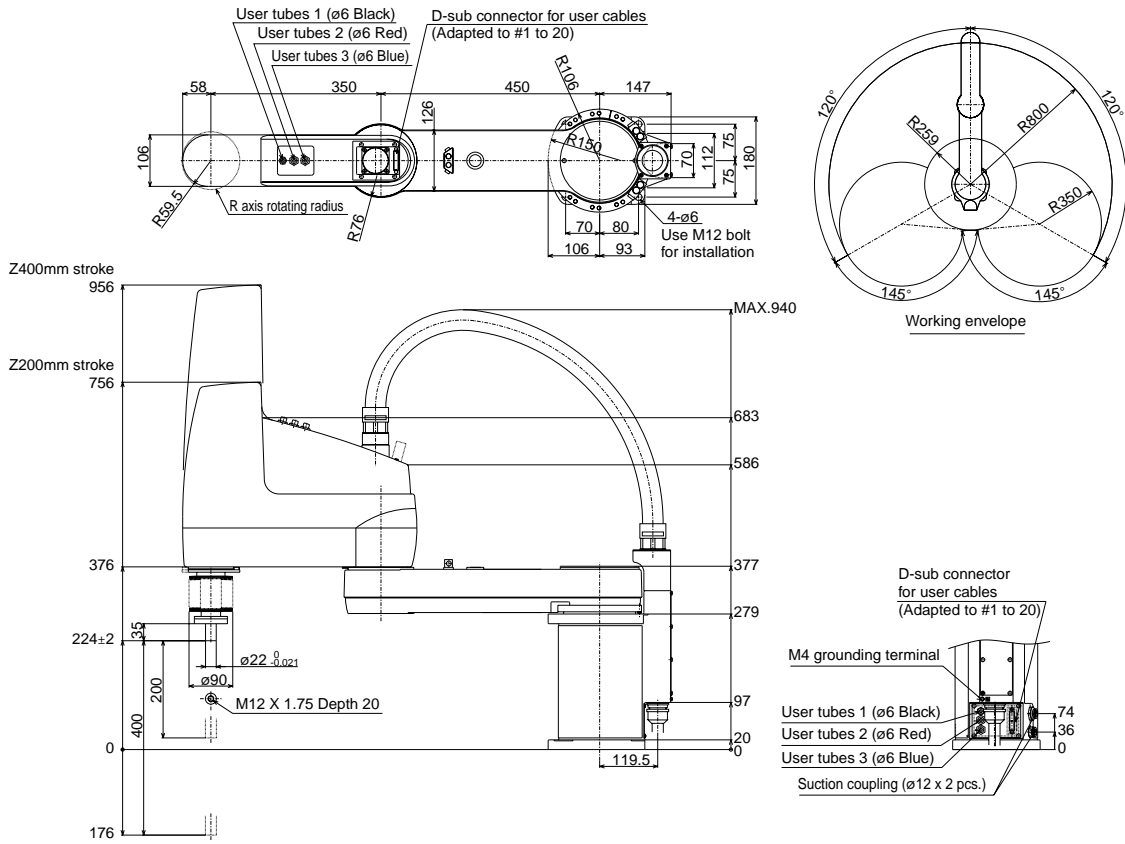


YK700XC

*1: This is the value at a constant ambient temperature. (X, Y axes)
 *2: There are limits to the setting of the acceleration coefficient.



YK800XC



YK1000XC

