

YK500·600XS

Ceiling-hanging Type

Inverse Type

Arm length 500·600mm/Maximum payload 10kg

Robot ordering method

YK500XS - 200 - 3L - 600 **RCX142 - E - R - N1 - CC - S**

Model Z axis stroke Cable length Controller

— 200:200mm — 3L:3.5m — CE Regenerative control/RGU2 Expansion I/O Network Battery

— 300:300mm — 5L:5m — Blank:Standard — E:CE specification

— 10L:10m

Controller type: Refer to the Controller Catalog for further details.

* Built-to-order product. Contact us for the delivery period.

Basic specifications

| Model | | YK500XS | YK600XS |
|--|----------------|---|--------------------|
| Axis specifications | X axis | Arm length | 250mm |
| | | Rotation range | ± 120° |
| | Y axis | Arm length | 250mm |
| | | Rotation range | ± 135° ± 145° |
| | Z axis | Stroke | 200mm, 300mm |
| R axis | Rotation range | ± 180° | |
| Motor | X axis | 400W | |
| | Y axis | 200W | |
| | Z axis | 200W | |
| | R axis | 100W | |
| Maximum speed | X, Y combined | 4.9m / s | 5.6m / s |
| | Z axis | 1.7m / s | |
| | R axis | 876° / s | |
| Repeatability*1 | X, Y axis | ± 0.02mm | |
| | Z axis | ± 0.01mm | |
| | R axis | ± 0.005° | |
| | Max. payload | | 10kg |
| Standard cycle time (with 2kg payload) | | 0.53 sec. | 0.56 sec. |
| R axis allowable moment inertia*2 | | 0.118kgm ² (1.2kgfcm ²) | |
| User wiring | | 0.2sq × 20 wires | |
| User tubing | | ø6 × 3 | |
| Movement limit setting | | 1. Soft limit, 2. Mechanical limit (X, Y, Z axes) | |
| Robot cable | | Standard 3.5m Option: 5m, 10m | |
| Controller, Power supply capacity | | RCX142-R, 1500VA | |
| Weight | | 30kg | 32kg |

*1: This is the value at a constant ambient temperature. (X, Y axes)

*2: There are limits to the setting of the acceleration coefficient.

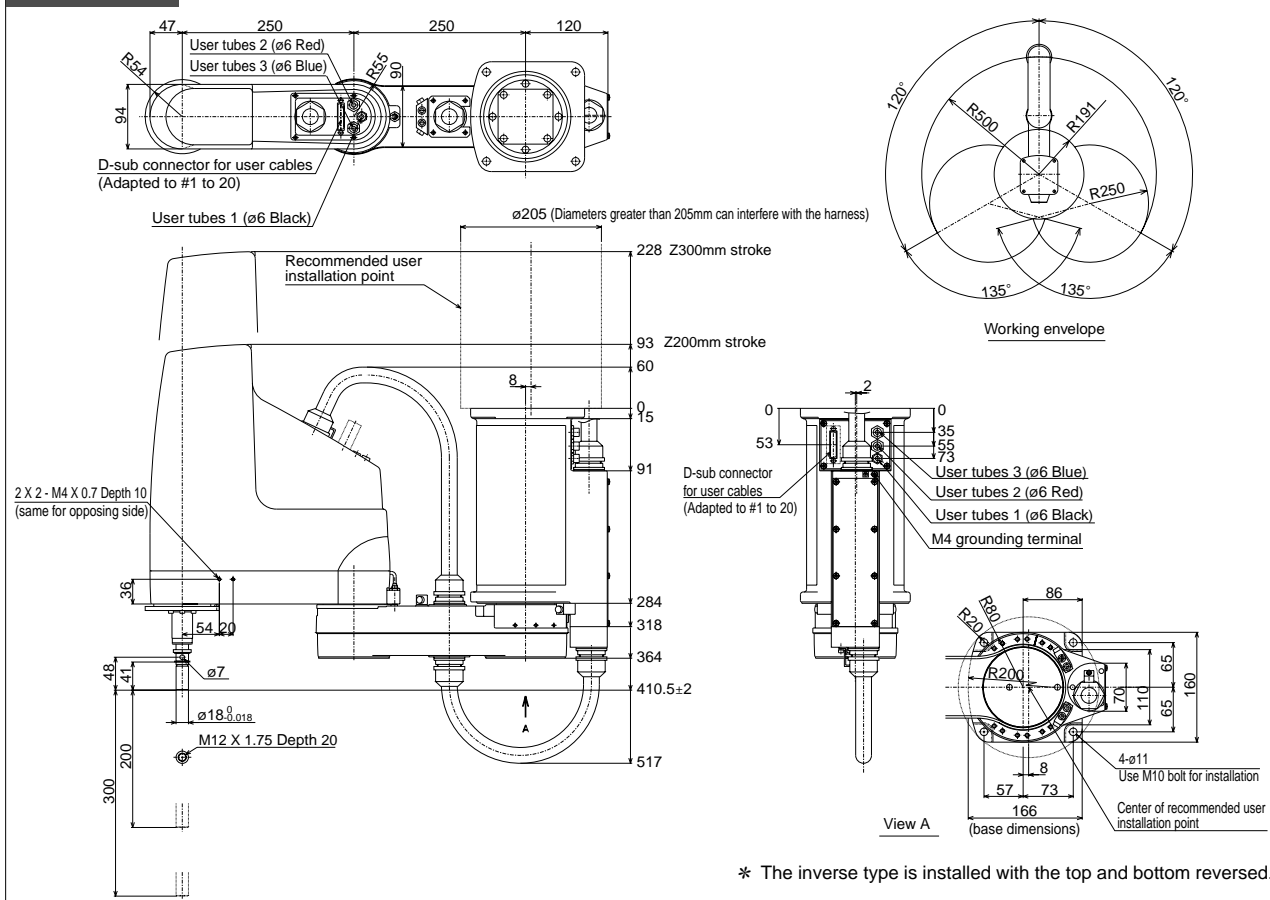


YK500XS (ceiling-hanging)



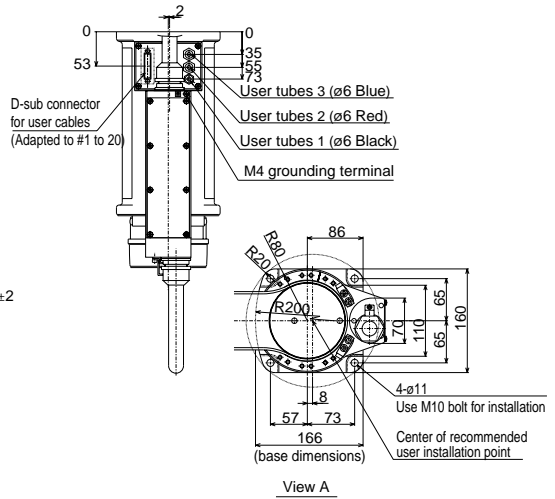
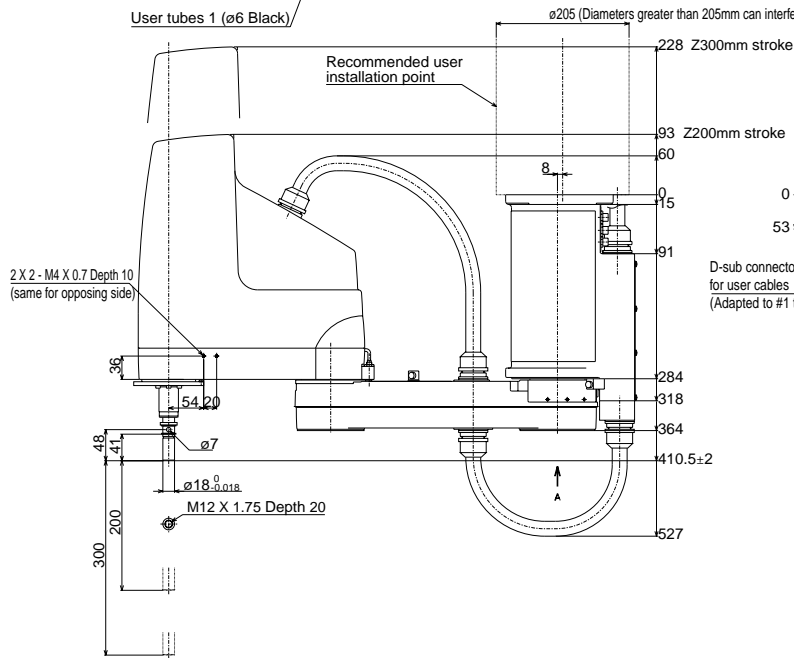
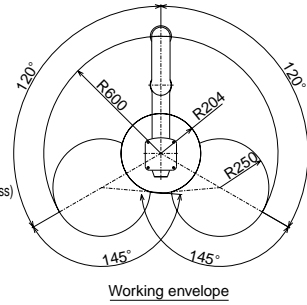
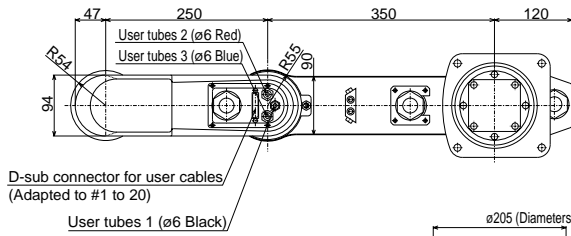
YK500XS (inverse)

YK500XS



* The inverse type is installed with the top and bottom reversed.

YK600XS



* The inverse type is installed with the top and bottom reversed.