

YK500·600XC

Clean Type

Arm length 500·600mm/Maximum payload 10kg

Robot ordering method

YK500XC - 200 - 3L - 600 Model	Z axis stroke 200:200mm 300:300mm	Cable length 3L:3.5m 5L:5m 10L:10m	RCX142 - E - R - N1 - CC - S Controller	CE Blank:Standard E:CE specification	Regenerative control:RGU2	Expansion I/O	Network	Battery
--	---	---	---	--	---------------------------	---------------	---------	---------

Controller type: Refer to the Controller Catalog for further details.

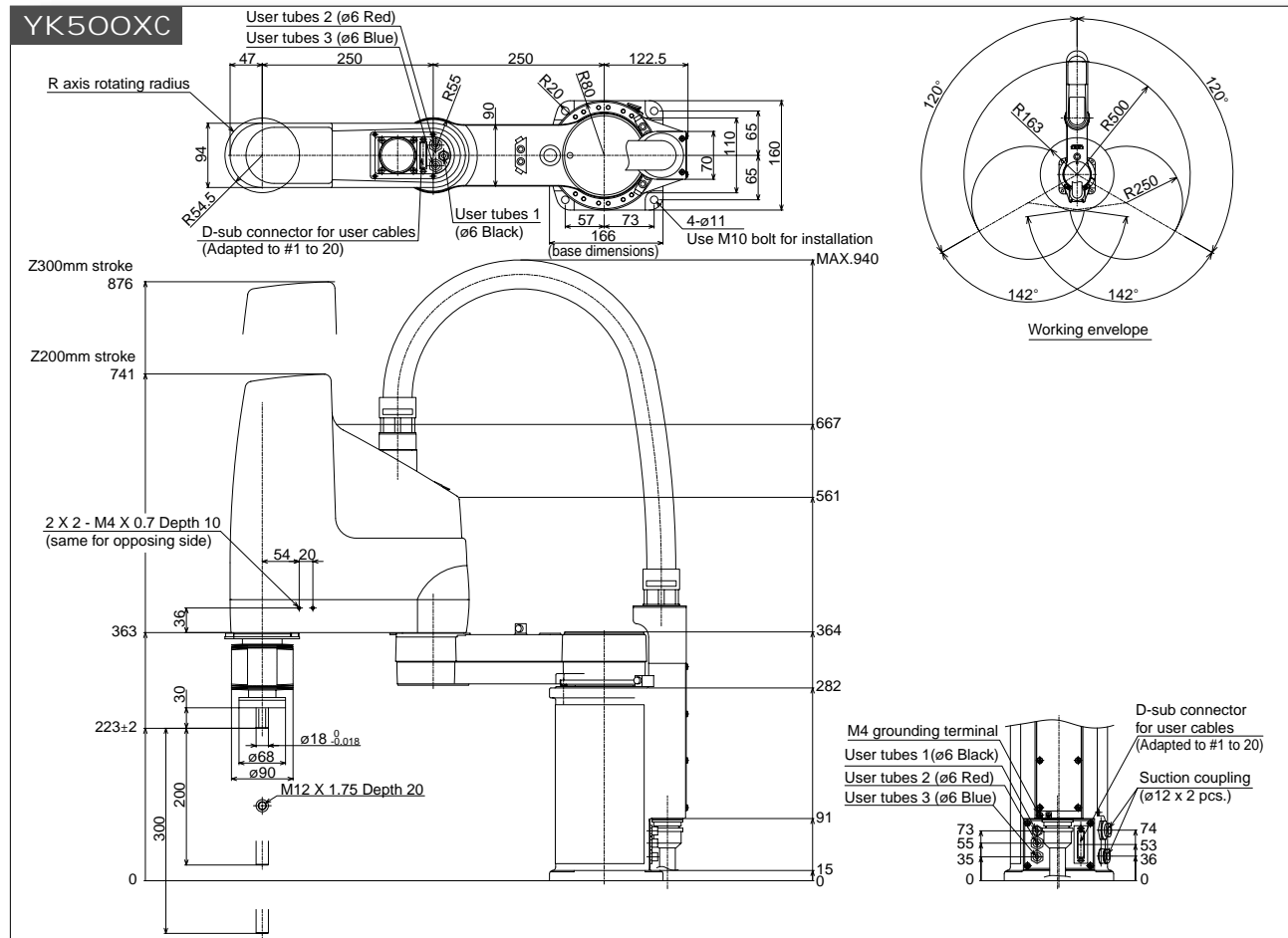
Basic specifications

Model		YK500XC	YK600XC
Axis specifications	X axis	Arm length	250mm
		Rotation range	± 120°
	Y axis	Arm length	250mm
		Rotation range	± 142°
Z axis	Stroke	200mm, 300mm	
R axis	Rotation range	± 180°	
Motor	X axis	400W	
	Y axis	200W	
	Z axis	200W	
	R axis	100W	
Maximum speed	X, Y combined	4.9m / s	5.6m / s
	Z axis	1.7m / s	
	R axis	876° / s	
Repeatability*1	X, Y axis	± 0.02mm	
	Z axis	± 0.01mm	
	R axis	± 0.005°	
	Max. payload	10kg	
Standard cycle time (with 2kg payload)	0.53 sec.	0.56 sec.	
R axis allowable moment inertia*2	0.118kgm ² (1.2kgfcm ²)		
User wiring	0.2sq × 20 wires		
User tubing	ø6 × 3		
Movement limit setting	1. Soft limit, 2. Mechanical stopper (X, Y, Z axes)		
Robot cable	Standard 3.5m Option: 5m, 10m		
Controller, Power supply capacity	RCX142-R, 1500VA		
Weight	31kg	33kg	
Cleanliness (0.1µm base)	Class10		
Suction volume (NI/min)	60		

*1: This is the value at a constant ambient temperature. (X, Y axes)
*2: There are limits to the setting of the acceleration coefficient.



YK500XC



YK600XC

