

YK300·400XS

Ceiling-hanging Type

Inverse Type

Arm length 300·400mm/Maximum payload 3kg

Robot ordering method

YK300XS - 150 - 3L - RCX142 - E - N1 - CC - S
400
 Model

Z axis stroke: 150:150mm

Cable length: 3L:3.5m, 5L:5m, 10L:10m

Controller: RCX142

CE: Blank:Standard, E:CE specification

Expansion I/O: N1

Network: CC

Battery: S

Controller type: Refer to the Controller Catalog for further details.

* Built-to-order product. Contact us for the delivery period.

Basic specifications

Model		YK300XS	YK400XS
Axis specifications	X axis	Arm length	175mm
		Rotation range	± 115°
	Y axis	Arm length	125mm
		Rotation range	± 140°
Z axis	Stroke	150mm	
R axis	Rotation range	± 180°	
Motor	X axis	200W	
	Y axis	100W	
	Z axis	100W	
	R axis	100W	
Maximum speed	X, Y combined	4.4m / s	6.0m / s
	Z axis	1.0m / s	
	R axis	1020° / s	
Repeatability*1	X, Y axis	± 0.01mm	
	Z axis	± 0.01mm	
	R axis	± 0.005°	
Max. payload		3kg	
Standard cycle time (with 2kg payload)		0.54 sec.	0.66 sec.
R axis allowable moment inertia*2		0.049kgm ² (0.5kgfcm ²)	
User wiring		0.2sq × 10 wires	
User tubing		ø4 × 3	
Movement limit setting		1. Soft limit, 2. Mechanical limit (X, Y, Z axes)	
Robot cable		Standard 3.5m Option: 5m, 10m	
Controller, Power supply capacity		RCX142, 1000VA	
Weight		15kg	

*1: This is the value at a constant ambient temperature. (X, Y axes)
 *2: There are limits to the setting of the acceleration coefficient.

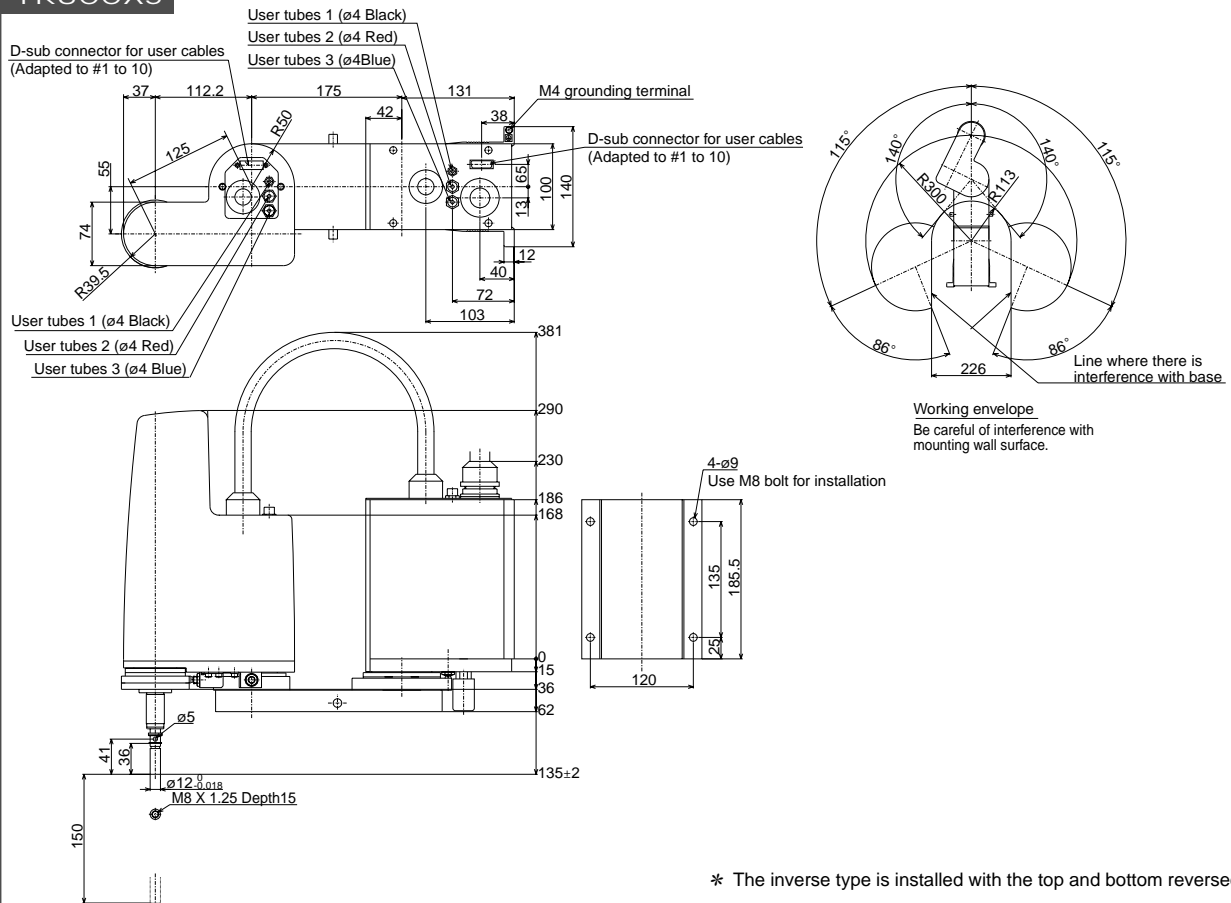


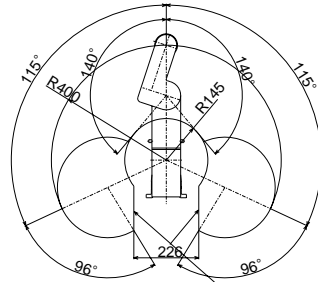
YK300XS (wall-hanging)



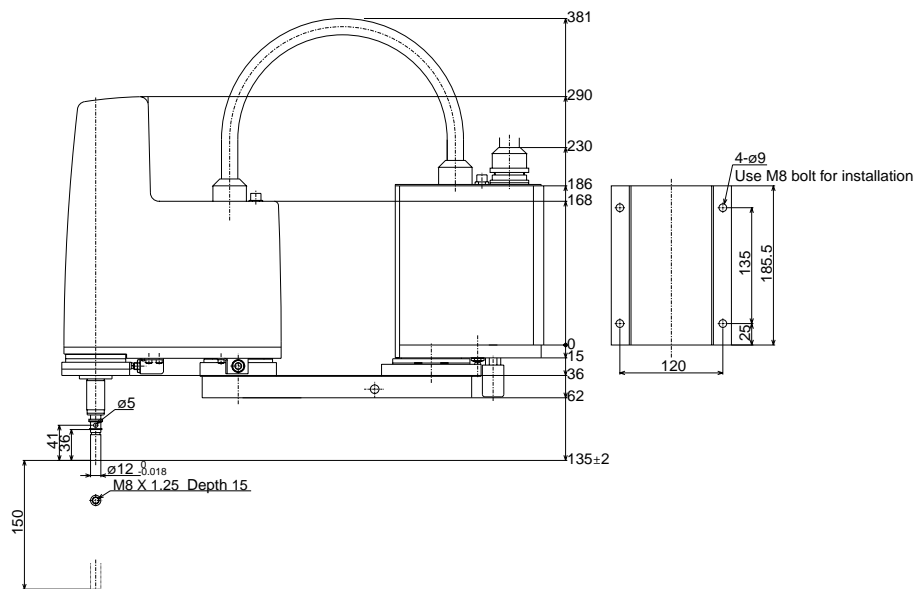
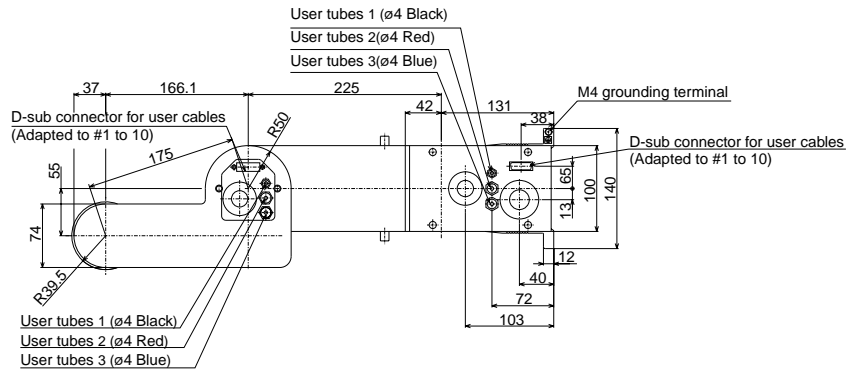
YK300XS (inverse wall-hanging)

YK300XS





Working envelope
Be careful of interference with mounting wall surface.



* The inverse type is installed with the top and bottom reversed.