

YK250~400XC

Clean Type

Arm length 250•350•400mm/Maximum payload 3kg

Robot ordering method

YK250XC - 150 - 3L - RCX142 - E - N1 - CC - S

350
400
Model

Z axis stroke
150:150mm

Cable length
3L:3.5m
5L:5m
10L:10m

Controller
CE
Blank:Standard
E:CE specification

Expansion I/O
N1

Network
CC

Battery
S

Controller type: Refer to the Controller Catalog for further details.

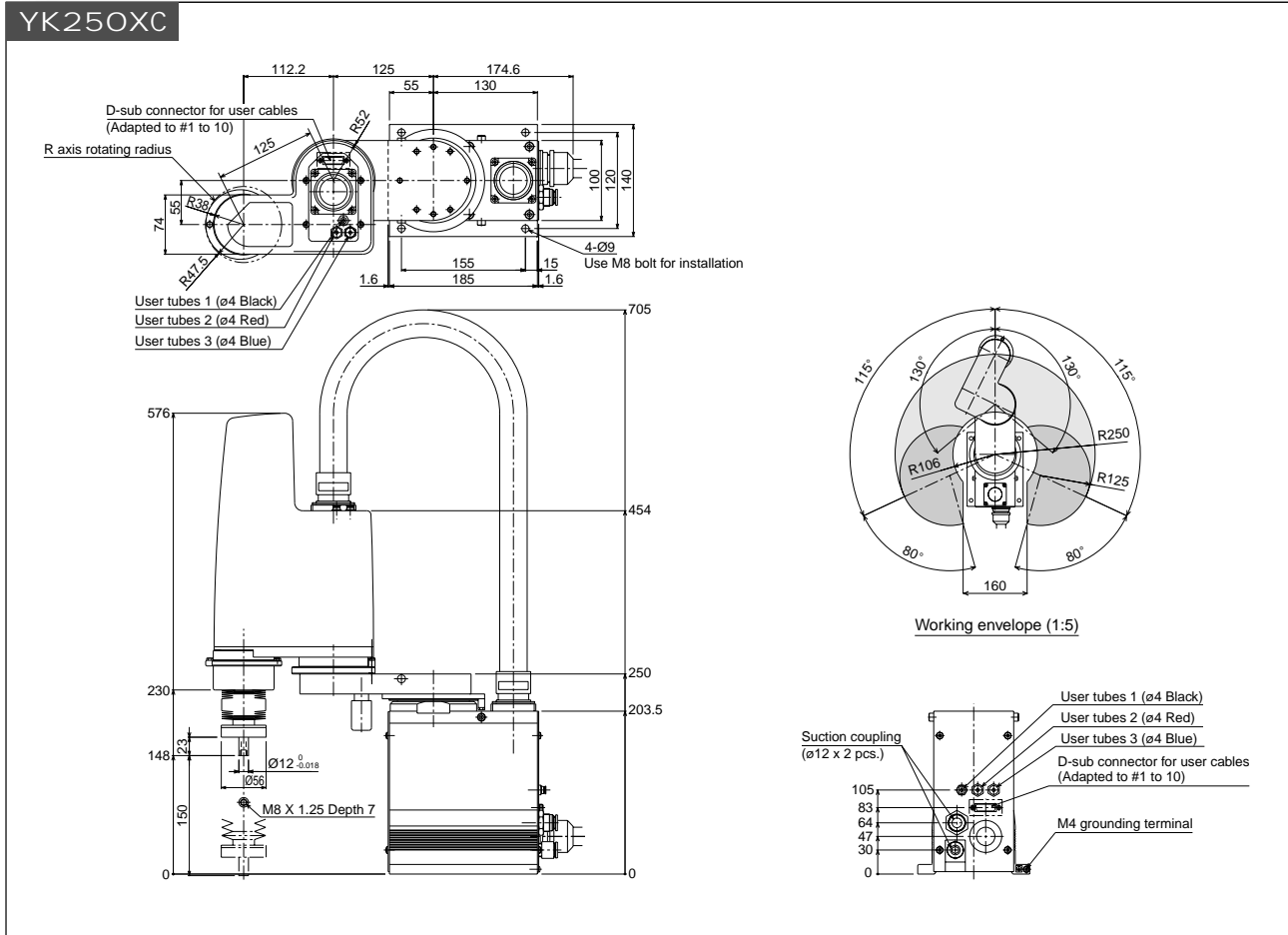
Basic specifications

Model		YK250XC	YK350XC	YK400XC	
Axis specifications	X axis	Arm length	125mm	225mm	225mm
		Rotation range	± 115°		
	Y axis	Arm length	125mm		175mm
		Rotation range	± 130°	± 128°	± 143°
	Z axis	Stroke	150mm		
R axis	Rotation range	± 180°			
Motor	X axis	200W			
	Y axis	100W			
	Z axis	100W			
	R axis	100W			
Maximum speed	X, Y combined	4.0m / s	5.0m / s	6.0m / s	
	Z axis	1.0m / s			
	R axis	1020° / s			
	X, Y axis	± 0.01mm			
Repeatability*1	Z axis	± 0.01mm			
	R axis	± 0.005°			
	Max. payload		3kg		
	Standard cycle time (with 2kg payload)		0.54 sec.		0.66 sec.
R axis allowable moment inertia*2		0.049kgm ² (0.5kgfcm ²)			
User wiring		0.2sq × 10 wires			
User tubing		ø4 × 3			
Movement limit setting		1. Soft limit, 2. Mechanical stopper (X, Y, Z axes)			
Robot cable		Standard 3.5m Option: 5m, 10m			
Controller, Power supply capacity		RCX142, 1000VA			
Weight		16kg			
Cleanliness (0.1µm base)		Class10			
Suction volume (Nl/min)		30			

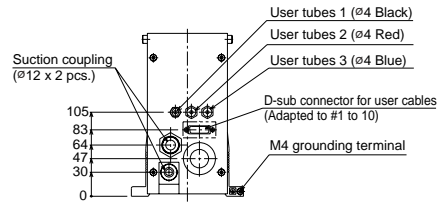
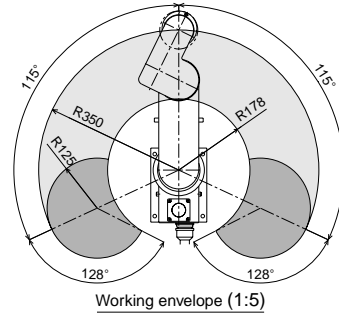
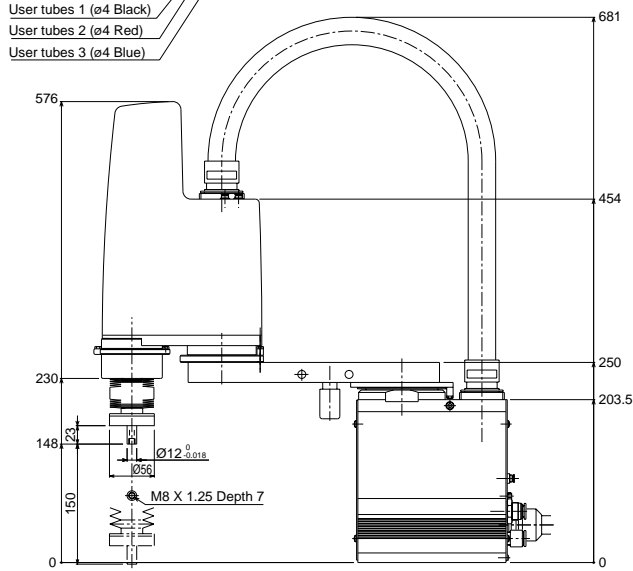
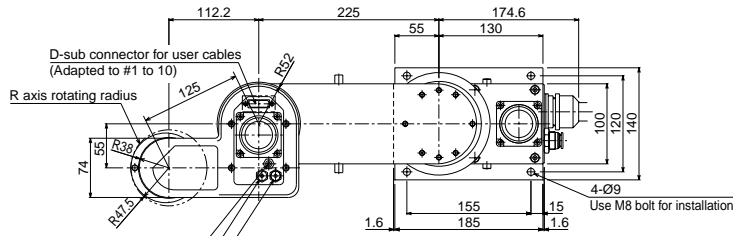


YK250XC

*1: This is the value at a constant ambient temperature. (X, Y axes)
*2: There are limits to the setting of the acceleration coefficient.



YK350XC



YK400XC

