

OMRON

NS12-V1 12-inch Model
NS10-V1 10-inch Model

NS8-V1 8-inch Model
NS5-V1 5-inch Model

Programmable Terminals

NS-NSDC1-V5

NS-Designer Version 4

NS-EXT01-V2

NS-Ladder Monitor **NS** Ladder Monitor

Installing a Navigator: A Totally New Concept in Programmable Terminals

Navigator for System



NS5-V1
5-inch Model

NS8-V1
8-inch Model

NS10-V1
10-inch Model

NS12-V1
12-inch Model

**Innovation
in the Solution Age**

OMRON INDUSTRIAL AUTOMATION

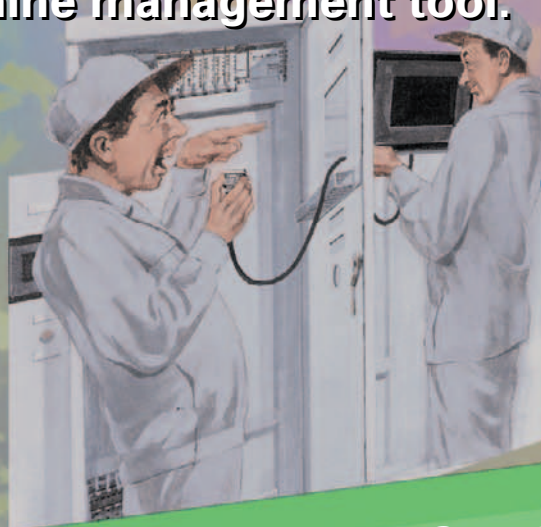
**Navigator for System
NS Series**

Make it More Simple

The NS is moving to the next stage, from a touch screen to an advanced machine management tool.



Switch Operation



Touch Screen Operation

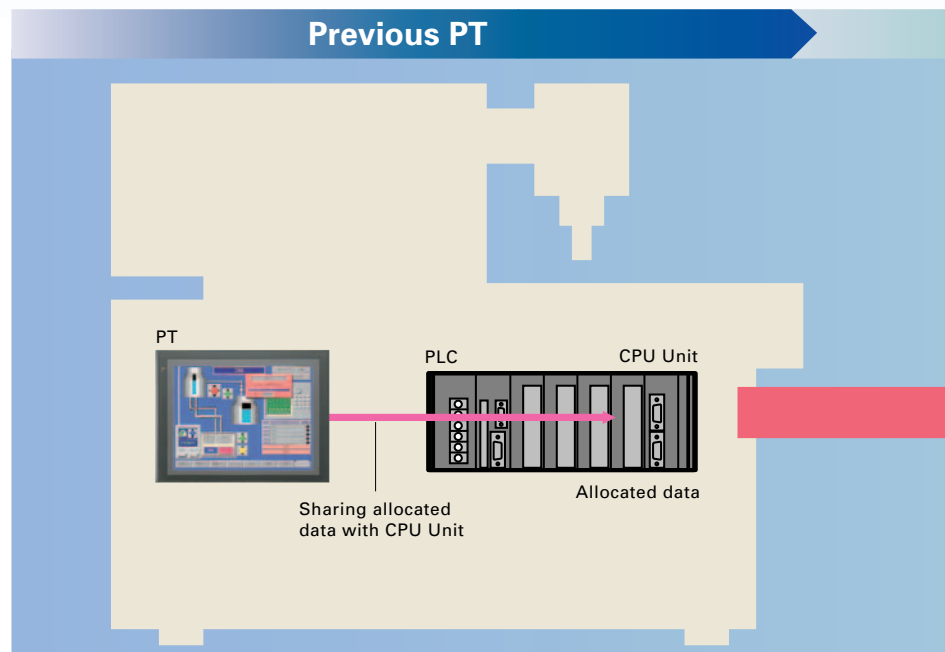
It's convenient but...



It's convenient but...

NS Enters a New Zone From PLC Memory Allocation to Device Access

Previous PTs shared data that was allocated in advance to specific words in the CPU Unit, and they were used to assist with device operations, and to display error locations, and countermeasures.



Seamless

We are always trying to provide solutions that will give the highest added value to your system. We strive to solve on-site problems with our solutions instead of just providing touch screen functions. That is what OMRON is focused on.

Machine Management

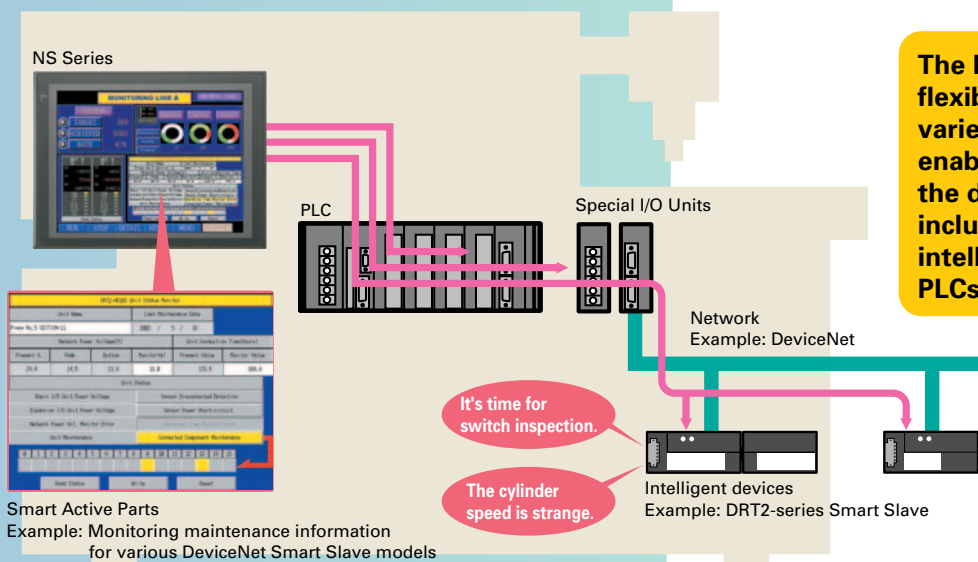
Smart

Turning switches into Touch Screens brings enhancements, such as minimum wiring, space savings, and improved local operation efficiency. Moreover, OMRON works to minimize the customer's energy expenditure from machine design to troubleshooting.

OK!

Previous zone

New zone



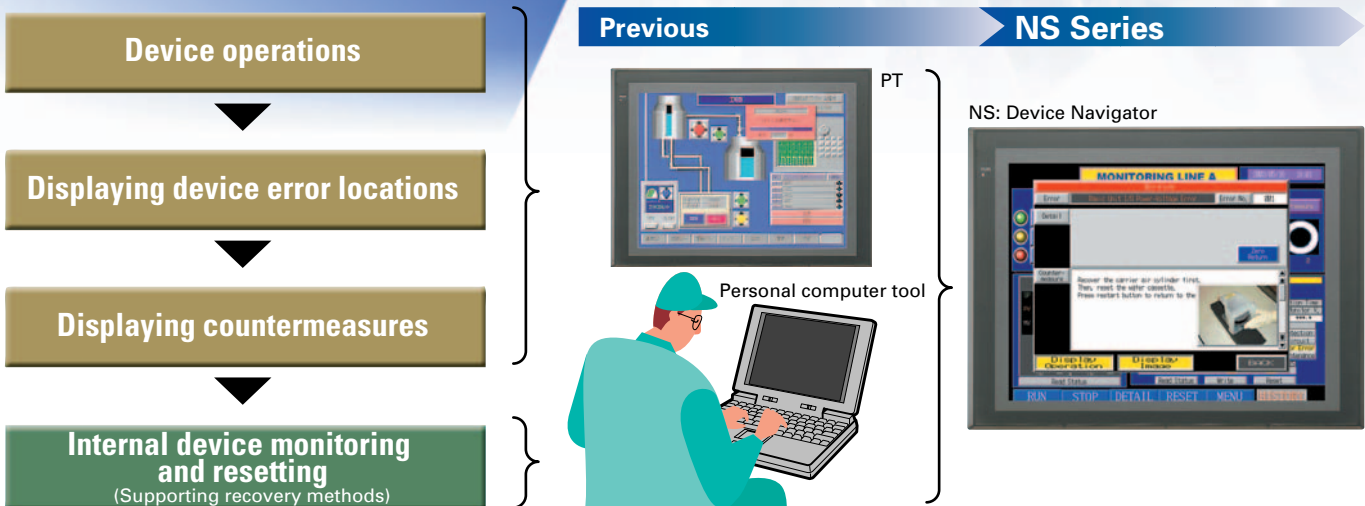
The NS Series achieves flexible data access to a variety of devices. It enables operators to reach the devices on the network including Special I/O Units, intelligent devices, and PLCs.

PTs as a Machine Navigator

NS-series PTs navigate all areas of machine operation, from daily operation to error recovery.



For years, NS has exchanged preset data with the CPU Unit in a PLC. Was it enough to control complex machine operations? This Series makes a step forward to be a partially software embedded terminal to deliver the needed information. So that's why we call it "Navigator"!



With version 1 PTs (V1 suffix in model number), hardware functions are upgraded.

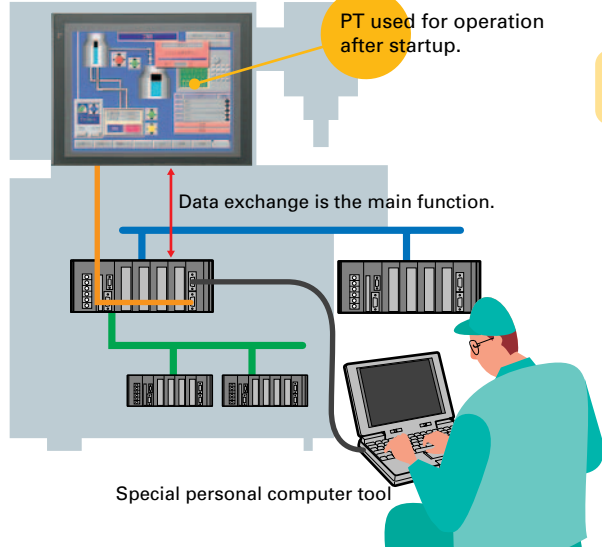
<p>High definition</p> <p>Image data: 32,768 colors (See note.) (Previously 256 colors)</p>	<p>Image data: Large capacity</p> <p>Standard 20 MB (See note.) (previously 4 MB)</p>	<p>Color screen printing to USB-compatible printers</p>	<p>Twice as fast as former models</p>
--	--	--	--

Note: NS5-V1: 4,096 colors

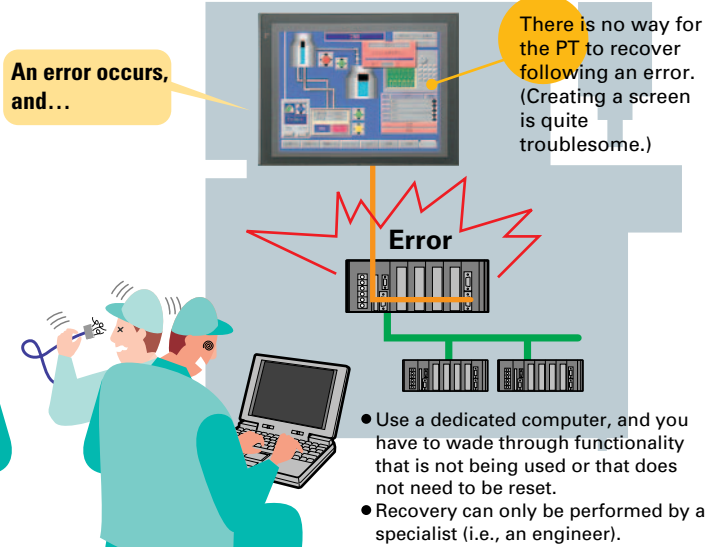
Note: NS8-V1/NS5-V1: 6 MB

Previous

■ When the System is Started



■ When an Error Occurs during Operation

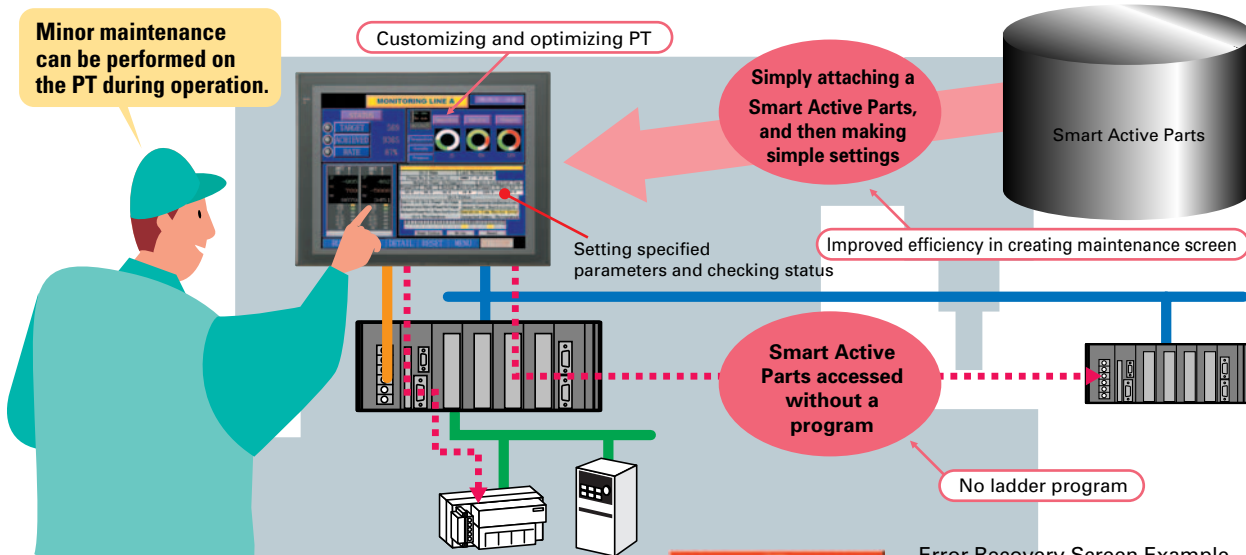


Only with NS!

With Smart Active Parts...

The PT can be customized according to the specifications of the device manufacturer to optimize operation as a tool. This enables equipment maintenance by personnel other than engineers.

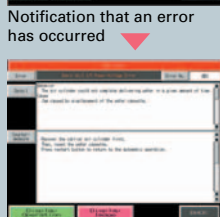
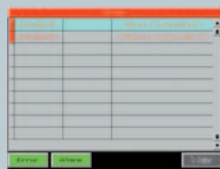
Minor maintenance can be performed on the PT during operation.



Create a screen like this as a device troubleshooter.

When an error occurs, rapid recovery is critical. With the NS Series, the following type of screen can be easily prepared to guide on-site workers to carry out the operations required for recovery.

- Display explanations of error contents and methods for recovery. (Text file direct specification)
- Use diagrams to show error locations and methods for recovery. (Bit map file direct specification)
- Display only the buttons required for recovery operations.



Error Recovery Screen Example

Text and BMP files can be directly specified, so operations such as correcting contents for recovery and replacing diagrams and photographs can be executed without requiring any special tools. For example, if the recovery operation procedure is changed by system improvements, screens can be changed by simply replacing text and BMP files, allowing for rapid implementation of improvements and countermeasures.

Note: Transfer tools must be used for transfers.



Note: In addition to the Troubleshooter for the machine above, there is a PLC troubleshooter for CS/CJ-series PLCs. Contact your OMRON representative for information on Troubleshooters.

Machine Localization with PTs

A Multi-language Input Environment Using Excel

- No special PT tools are required for translation operations.
- Translations can be requested using e-mail attachments.

Label Switching Function for Up to 16 Languages

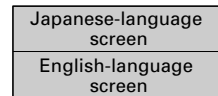
- Devices can be started with Japanese-language screens, and then operated with screens in other languages.
- The languages can be switched to the one preferred by the device operators.

Previous

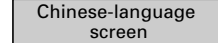
Either a single screen data file was divided between Japanese and English screens, or else multiple screen data files had to be created.



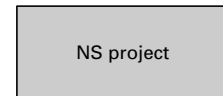
English and Japanese screen data



Chinese screen data



Dual-language screen data



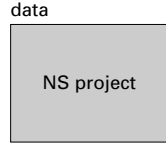
Because multiple labels can be set, screen data needs to be set only once. Multi-language capability is simply a matter of switching labels.

Only with NS!

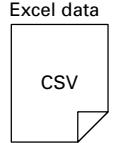
You can get multi-language support in Excel. Switching to as many as 16 languages is as easy as switching labels.



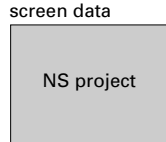
Language A screen data



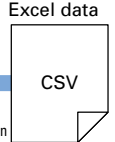
Language A Excel data



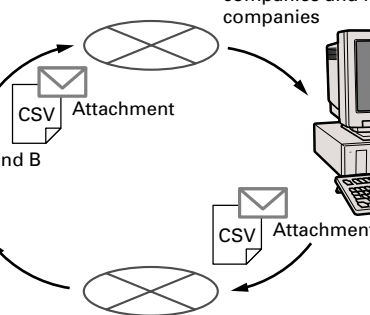
Dual-language screen data



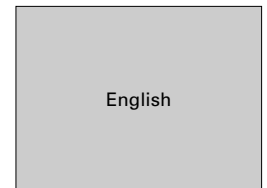
Language A and B Excel data



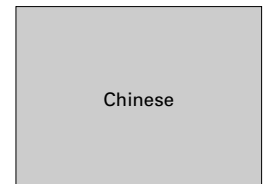
Dual-language input in Excel by translation companies and local companies



Example: When device is started



During device operation



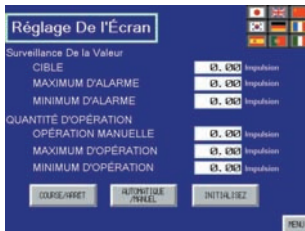
Example: Switching the operator to the operator's language with one touch



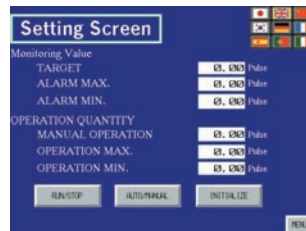
Note: Windows 2000 or XP is required for multi-language support.

16 languages max.

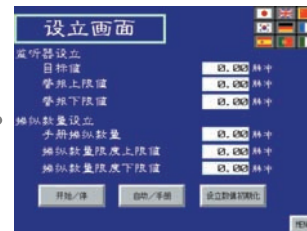
Label 0



Label 1



Label 15



NS Series



Multi-Language PT

• Asian Languages

Japanese, Simplified Chinese (see note 1), Korean, and Traditional Chinese (see note 2)

• European Languages

English, French, German, Italian, Portuguese, Spanish, Swedish, Dutch, Finnish, Norwegian, Basque, Catalan, and Danish

Only with NS!

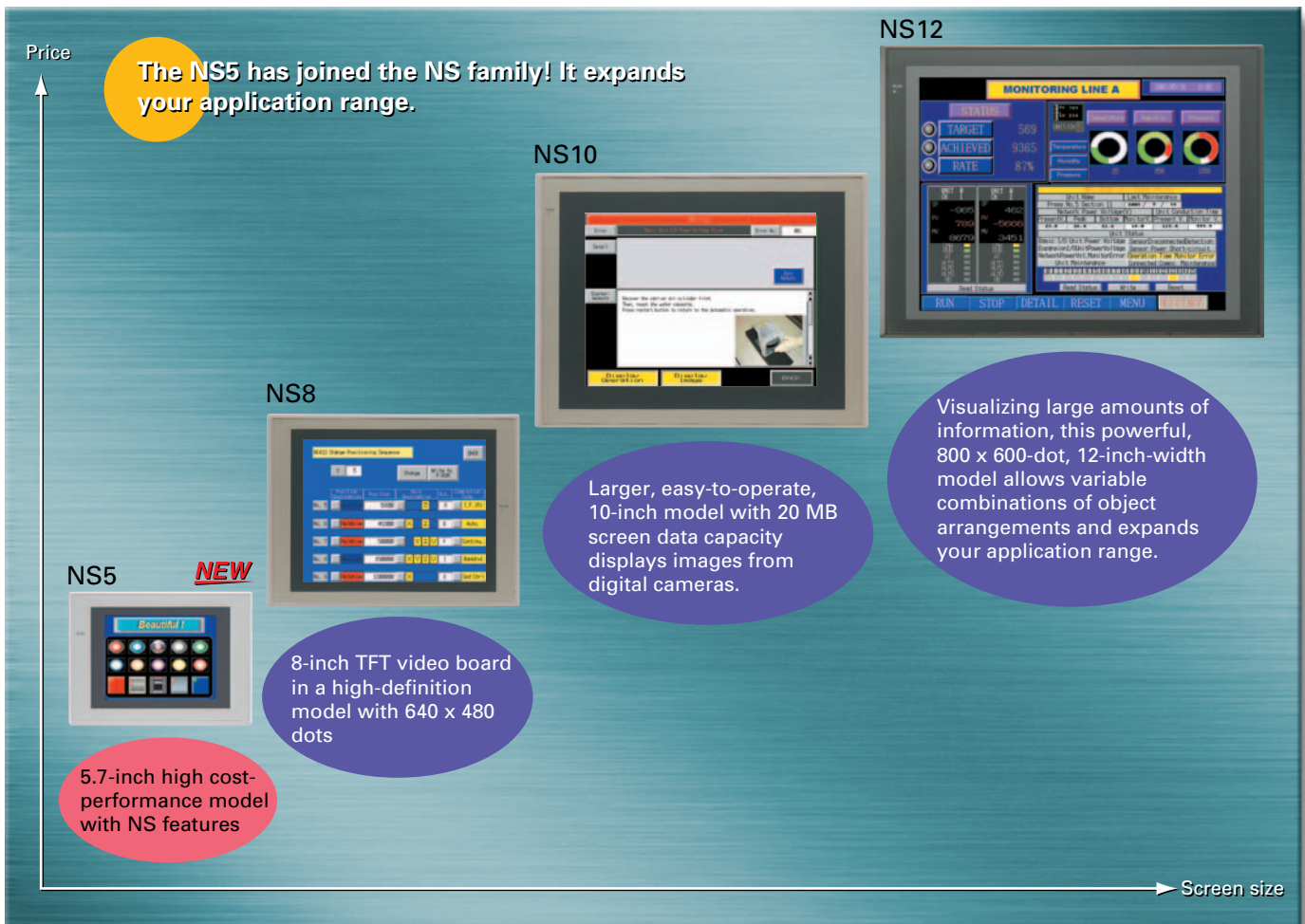
- Support for 17 languages
- Switching to as many as 16 languages by simply switching the labels



From English to Spanish or Portuguese

Note 1: Simplified Chinese: Chinese with partially simplified characters, mostly used in Mainland China.
 Note 2: Traditional Chinese: Chinese with traditional characters, mostly used in Hong Kong and Taiwan.

The 5-inch screen expands your application range.



NS-series Lineup

Series		NS12	NS10	NS8	NS5
Appearance					
		12.1 inches 800 X 600 dots TFT	10.4 inches 640 x 480 dots TFT	8 inches 640 x 480 dots TFT	5.7 inches 320 x 240 dots STN
Dimensions (WxHxD)		315 x 241 x 48.5 mm	315 x 241 x 48.5 mm	232 x 177 x 48.5 mm	195 x 142 x 54 mm
Effective display area		12.1 inch	10.4 inch	8 inch	5.7 inch
Display device		TFT	TFT	TFT	STN
Number of dots		800 x 600 dots	640 x 480 dots	640 x 480 dots	320 x 240 dots
Display colors	Basic colors (objects, background, etc.)	256 colors	256 colors	256 colors	256 colors
	Image data (BMP or JPG images)	32,768 colors	32,768 colors	32,768 colors	4,096 colors
	Images displayed via video input (See note.)	260,000 colors	260,000 colors	260,000 colors	—
Screen data capacity		20 Mbytes	20 Mbytes	6 Mbytes	6 Mbytes
Memory Card		○	○	○	○
Ladder Monitor function		○	○	○	—
Video Input Unit support		○	○	○	—
Controller Link Interface Unit support		○	○	—	—

Note: The video input is not supported by the NS5-V1.

The NS Series is more beautiful and user-friendly.

More beautiful: You can make beautiful screens with simple operations.



- Beautiful BMP Parts Collection has been newly added **Ver.5**
Simply select the desired part, paste it on your screen, and make your screens neat!

Windows fonts can be used for switches and lamps **Ver.5**



- Auto font resizing function **Ver.5**
Automatically resizes fonts to the object size.
No need to adjust font sizes manually anymore!



- 32,768-color display
The color variation displays pictures brilliantly!

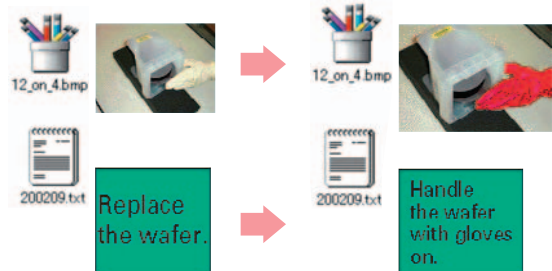
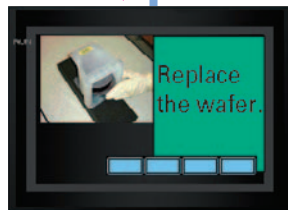
More user-friendly

You can partially replace text and pictures from your computer.

- FTP (File Transfer Protocol) has been added!
Texts, lists, and recipes can be replaced with the put/get command from your computer!
You can even replace BMP files from your computer easily.



Screens, bitmaps, text, recipe data



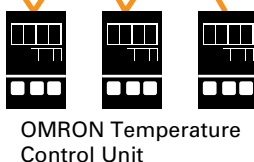
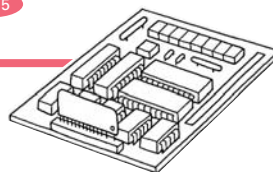
More strength in applications

The NS can be connected to a Board PC. The NS can also be directly connected to an OMRON Temperature Controller.



Memory link

A Memory Link has been added to the communications method. It allows the NS to communicate with a Board PC. **Ver.5**



The NS can be directly connected to the OMRON Temperature Controllers listed on the right.

The following models, which have an RS-485 communications port and support CompoWay/F communications, can be connected to the NS.

Unit	Series	Model
Modular Temperature Controllers	E5ZN	E5ZN-SCT24S-500 (terminal unit)
Digital Temperature Controllers	E5AN	E5AN-□□M□-500 + E53-AK03
	E5EN	E5EN-□□M□-500 + E53-AK03
	E5CN	E5CN-□□M□-500 + E53-CN03 or E53-CN03
	E5GN	E5GN-□□□□03□-FLK
Digital Controllers	E5AR	E5AR-QC43DB-FLK
		E5AR-QQ43DW-FLK
		E5AR-CC43DWW-FLK
	E5ER	E5ER-QC43B-FLK
		E5ER-PRQ43F-FLK
		E5ER-QT3DW-FLK
		E5ER-CT3DW-FLK

Upgrade with NS-V1

Beautiful

High definition

Displays image data (BMP and JPG) beautifully.

NS5	4,096 colors
NS8	32,768 colors
NS10	32,768 colors
NS12	32,768 colors

Previous: 256 colors



NS-V1: 32,000 colors



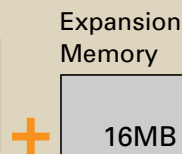
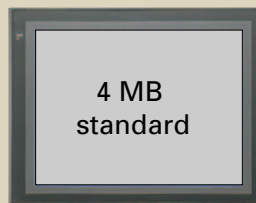
Large

Large-capacity image data

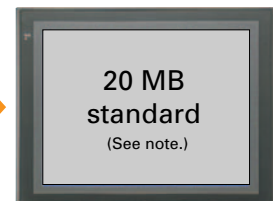
Five times the standard for image data capacity

NS5	6 MB
NS8	6 MB
NS10	20 MB
NS12	20 MB

Previous screen data capacity



NS-V1 screen data capacity



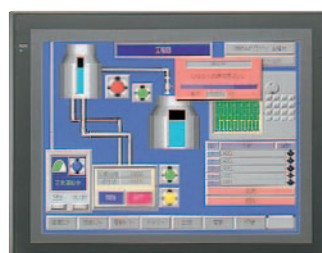
Printer Support

USB port compatibility with commercially available printers

Hard copies of screens can be printed out in color by USB-compatible printers.

NS5	See note.
NS8	Supported
NS10	Supported
NS12	Supported

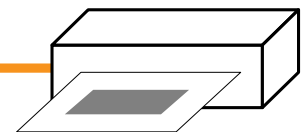
Note: Supporting a printer connection by mounting a USB interface is planned for the future.



USB port included as standard equipment

General printer compatible with USB port

USB cable



EPSON and Canon printers supported.

- Manufacturer: EPSON or Canon
- Recommended models
EPSON: PM-2200C, PM-930C, PM-870C, PM-740C
Canon: BJ-M70, Pixus50i, 550i

Faster

Faster drawing speed

Twice as fast as former models

NS5	See note.
NS8	Yes
NS10	Yes
NS12	Yes

Note: The NS5 uses a different graphic controller from other models.

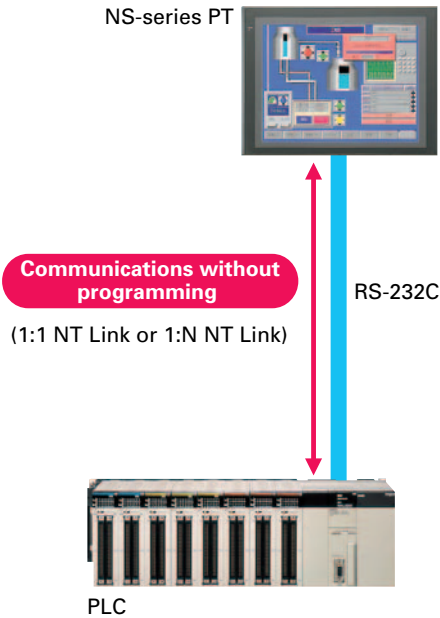
Faster drawing speed made possible by new hardware.

200-MHz RISC CPU
High-speed graphics controller

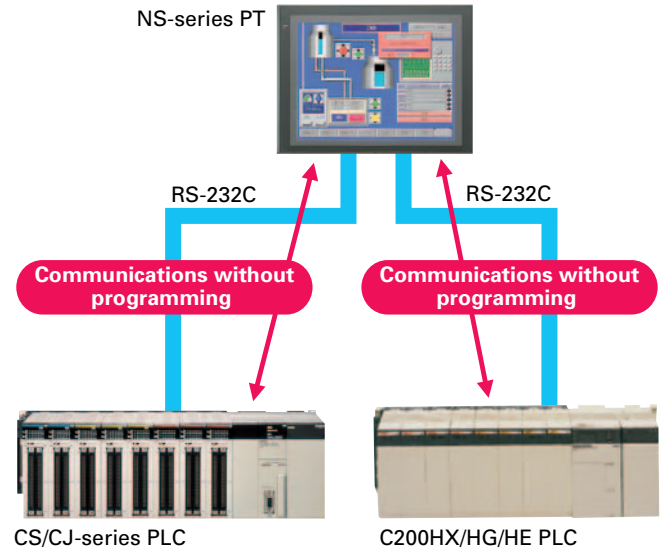
System Configurations

Various connections, such as 1:1, 1:2, 1:N, and M:N, are supported with Ethernet or serial connections.

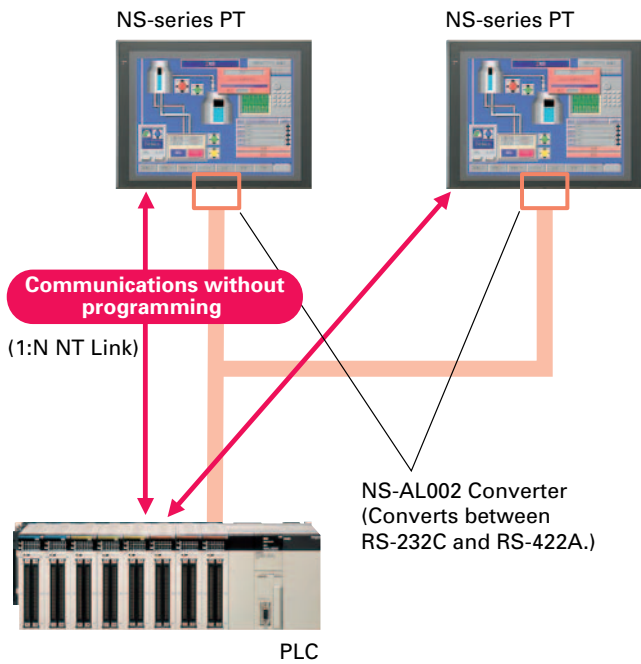
PT:PLC = 1:1



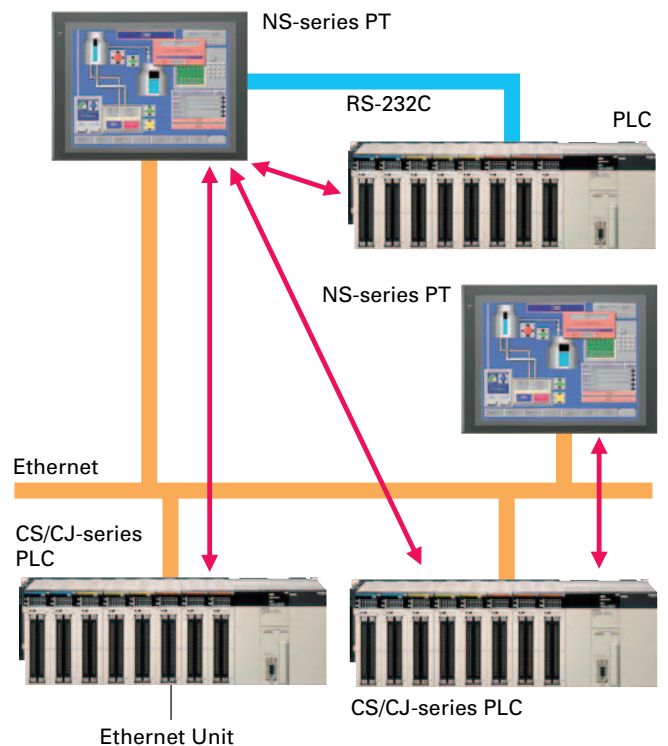
PT:PLC = 1:2



PT:PLC = 1:N



PT:PLC = M:N



Host Registration Function

It is possible to register two or more PLCs as hosts and communicate with the PLCs by specifying the host ID and address.

Powerful networking

Exchanging Data with a PLC over a Network (Multihost)

Communicating with a PLC via NT Link, using Ethernet without Special PLC Programming

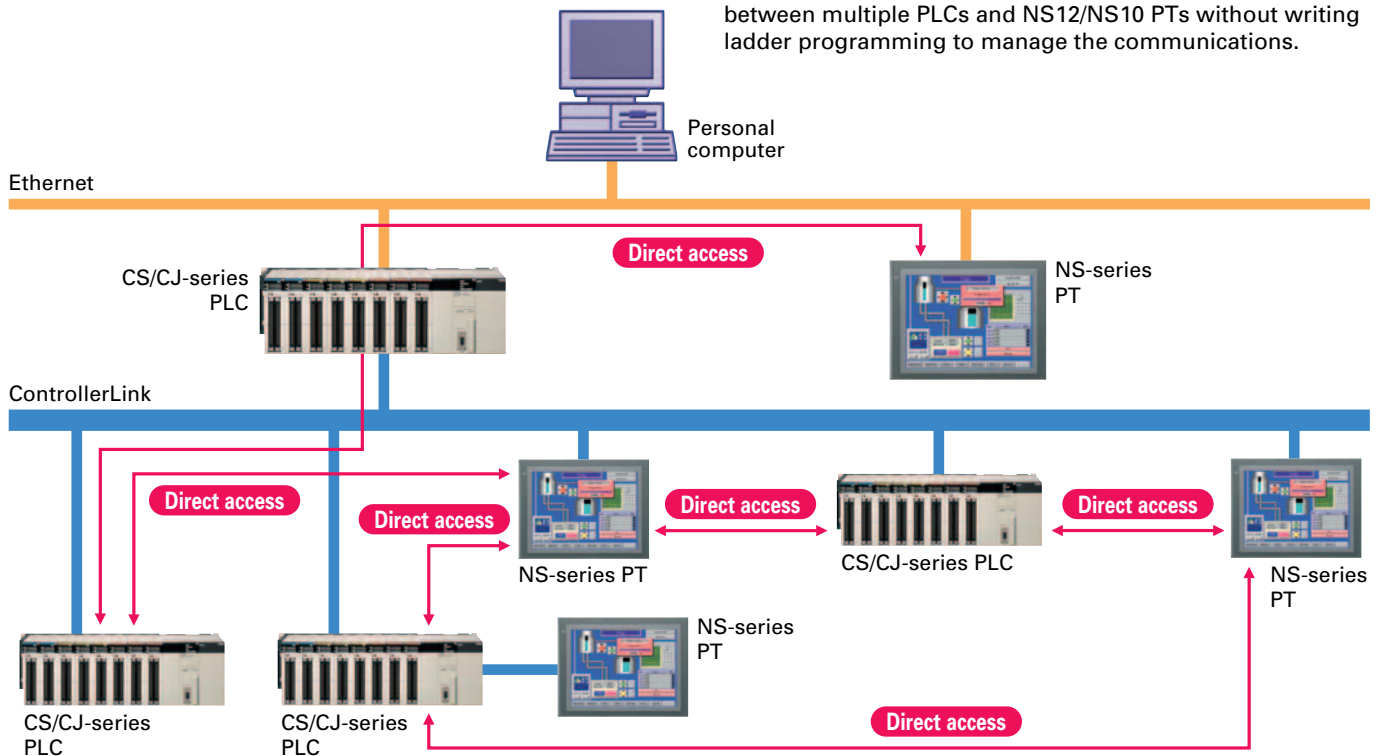
Ethernet Communications without Programming

NS-series PTs can communicate with a CS/CJ-series PLC (equipped with an Ethernet Unit) through “program-free” communications just like NT Link communications. Data is transferred through Ethernet through a simple PLC address and initial communications setup.

Using Data Links between the PT and the PLC

Controller Link Interface Unit

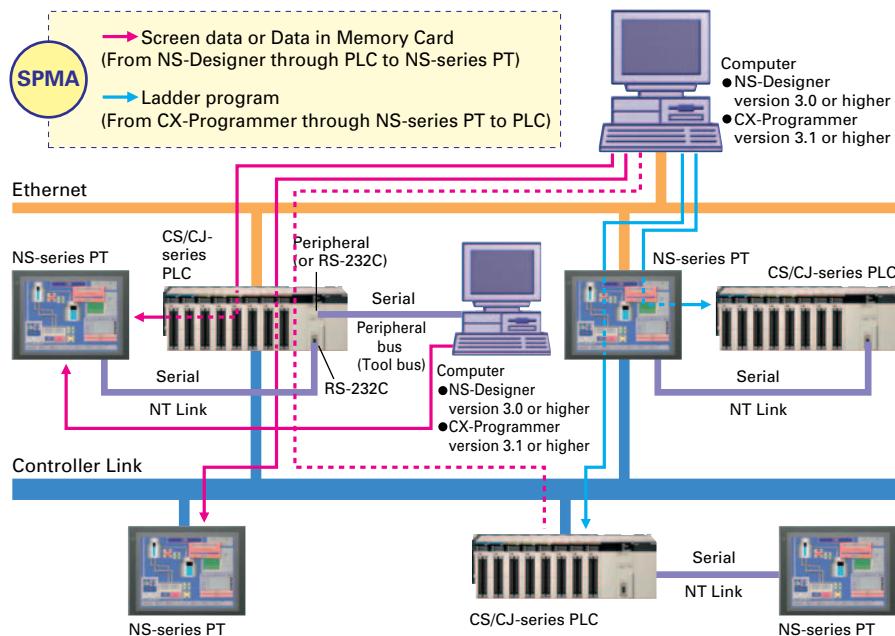
The Controller Link is an FA network that can send and receive large data packets flexibly and easily among OMRON PLCs and IBM PC/AT or compatible computers. The NS12 and NS10 PTs can be connected to the Controller Link network easily via a Controller Link Interface Unit. When a Controller Link network is used, data can be transferred between multiple PLCs and NS12/NS10 PTs without writing ladder programming to manage the communications.



SPMA (Single Port Multi Access) Function

When transferring screen data from the NS-Designer to the NS-series PT, the data can be transferred through a PLC as long as the PT is connected to the PLC by a serial connection or network connection. Also, when monitoring/transferring a PLC ladder program from the

CX-Programmer, the PLC ladder program can be monitored/transferred through an NS-series PT as long as the PT is connected to the PLC by a serial connection or network connection.



* To use the SPMA function through the PLC, the following software and hardware versions are required.

- NS-series PT: System version 3.0 or higher
- NS-Designer: Version 3.0 or higher
- CX-Programmer: Version 3.1 or higher
- PLC: Lot No. 030201 and later (Refer to the following table.)

PLC series	CPU model	Lot number
CJ Series	CJ1H-CPU65H	030201
	CJ1H-CPU66H	
	CJ1G-CPU42H	
	CJ1G-CPU43H	
	CJ1G-CPU44H	
	CJ1G-CPU45H	
	CJ1M-CPU11	
	CJ1M-CPU21	
	CJ1M-CPU12	
	CJ1M-CPU13	
	CJ1M-CPU22	
CJ1M-CPU23		
CS Series	CS1H-CPU63H	030201
	CS1H-CPU64H	
	CS1H-CPU65H	
	CS1H-CPU66H	
	CS1H-CPU67H	
	CS1G-CPU42H	
	CS1G-CPU43H	
CS1G-CPU44H		
CS1G-CPU45H		

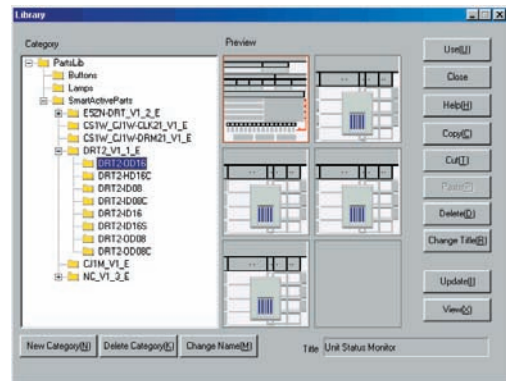
Facilitate Equipment Maintenance

Integrating Special Unit Functions or Component Peripheral Tool Functions into PTs

● Smart Active Parts (Device Libraries)

The Smart Active Parts with the following functionality are installed as a standard feature in NS-Designer version 4 or higher. These libraries can be used from the NS-Designer menu bar (Tool – Use Library).

- (1) CJ1M
Built-in I/O settings and origin search/return settings
- (2) DRT2
ID16/ID16S/ID08/HD16C/OD16/OD08/OD08C
- (3) DeviceNet E5ZN
PID settings, operation commands, target settings, setting area 0 settings, faceplates
- (4) Network monitoring
Monitoring Controller Link and DeviceNet networks



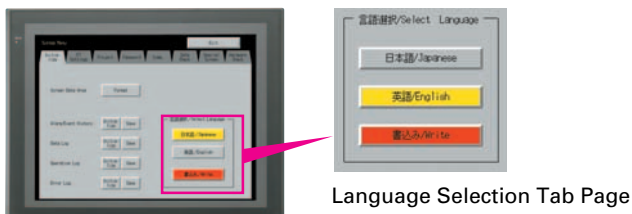
- (5) Position Control Units
Direct operation, jogging, origin searches, origin returns, teaching, changing present values, inputting data

Multiple Language Support

Switching Error Messages between English and Japanese

A Dual-language (English/Japanese) System Program

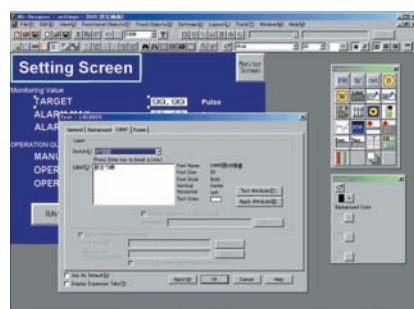
With an NS-series PT, the display language for the system menu and error messages can be switched between English and Japanese with the System Menu's Select Language function. Like the Label Switching function, the Dual-language setting is useful for exported products because the language can be set to English for normal operation and switched to Japanese when Japanese staff need to operate the equipment or perform maintenance.



Creating Chinese, Korean, or Other Language Screens in Any Language Version of Windows

Multi-language Input (When Windows 2000 or XP is Used)

When Windows 2000 or XP is being used, Simplified Chinese (see note), Traditional Chinese (see note), Korean, and other language text can be input in NS-Designer. Select the desired language with Global IME to input a different language.



Note: Simplified Chinese: Chinese with partially simplified characters, mostly used in Mainland China.
Traditional Chinese: Chinese with traditional characters, mostly used in Hong Kong and Taiwan.

Making Multiple Language Versions with a Single Screen Data File

Label Switching Function

Up to 16 groups of labels (labels 0 to 15) can be registered for functional objects such as buttons, lamps, labels, and alarm settings. (Each label can correspond to a different language, for example, label 0 = Japanese, label 1 = Simplified Chinese, label 2 = Korean, label 3 = English, etc.) Once all of the labels have been input in each language with the multilingual input function, all of the labels can be switched to a different language at once just by specifying the corresponding label number from the PLC.



Example: The label switch function can be used to switch between English and Simplified Chinese.

Having a Japanese Label Converted into Multiple Languages by a Translation Company

CSV File Input/Output

The property settings for each functional object can be exported in CSV format. The settings data can be imported again after it has been edited with a program such as Excel.

Label	Address	Color1	Color2	Font Name	Text Color	Font Size
4 P80004	8E0	7	14	Standard	0	1X1
4 STR0012	SerialA DA	1	Standard	8P	200	
4 STR0012	SerialA DA	1	Standard	8P	200	
4 LBL0013	Multi-Language Displ	206	Jr JSV/rE	1	14	
4 P800014	Select Lan SerialA DA	12	7	Standard	0	1X1
4 PL0001	Lamp	8E0	0	14	Standard	8P
4 LBL0002	Useful Function 1	7	Jr JSV/rE	15	20	
4 LBL0019	Labels	133	Jr JSV/rE	1	1X1	
4 P800019	Japanese JSWID	7	Standard	0	1X1	
4 P800020	English JSWID	7	Standard	0	1X1	
4 LBL0007	Various Indirect Spec	7	Jr JSV/rE	0	1X1	

The NS monitors machine status for who and how machines are managed to help speed recover from problems.

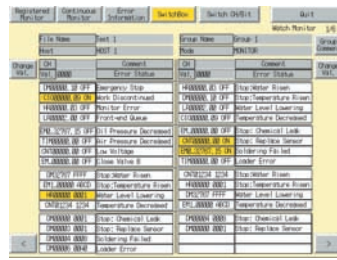
Monitoring and Setting PLC Data

For Operators

Display machine status simply.

Do not want to be aware of ladder programs and PLC memory areas.
Only want to display I/O comments and I/O status.

Solve with the Switch Box function



Easily Displaying the Status of Particular Bits in Ladder Programs when Errors Occur

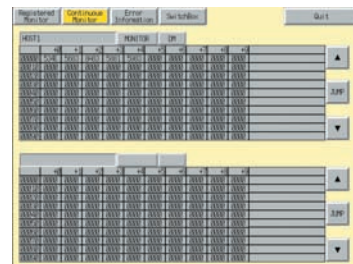
Switch Box Function

The Switch Box Function has been added to the NS-series Programmable Terminals. The Switch Box Function can be used to monitor the status of each bit in a word or a combination of user-selected bits organized like a ladder program section. The Switch Box Function makes it possible to perform basic troubleshooting on the factory floor even without a computer.

Display PLC memory areas without using tools.

Want to display and change the PLC memory areas without showing the PLC program.

Solve with the Device Monitor function



Monitoring PLC I/O Data for the Purpose of Device Debugging and Maintenance

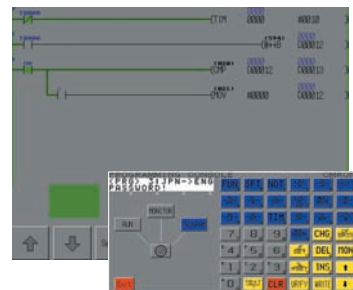
Device Monitor Function

The Device Monitor Function is a standard feature in the NS-series Programmable Terminals. Data in the PLC's I/O memory can be accessed directly (read and written.) The Device Monitor provides functions that can significantly reduce the time needed to set up the system, such as displaying a block of consecutive PLC data area addresses and inputting/verifying parameters in CPU Bus Units and Special I/O Units.

Display program without using tools

Want to identify the fault location by checking the actual PLC program.
Want to change part of the program, a timer/counter, without connecting tools.

Solve with the Ladder Monitor function



Monitoring Execution of the PLC's Ladder Program

Ladder Monitor Function

(NS12-V1/NS10-V1/NS8-V1)

Save the NS-EXT01 Ladder Monitor system program on a Memory Card (the NS-EXT01 is sold separately) and install the Memory Card to enable monitoring of a ladder program (I/O bit status monitor, address/instruction search, multiple I/O bit monitor, etc.) being executed in a CS/CJ-series PLC connected by a serial connection. It is also possible to display I/O comments created with the CX-Programmer.

For Experts

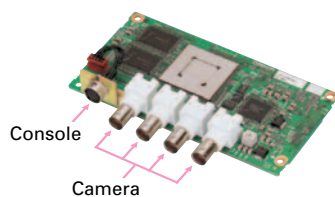
Using Video Inputs

Capturing Moving Images from a Video Camera and Image Outputs from a Vision Sensor, and Doing Layout on a PT Screen

Video Input Interface

(Supported by the NS12-V1/NS10-V1/NS8-V1.)

Four video input interfaces are provided, so four video or CCD cameras can be connected. Up to four images can be displayed simultaneously if the image size is 320x240 pixels.



Saving Displayed Video Images to a Memory Card in BMP Format

Image Capture Function

When necessary, the displayed image can be captured and saved in a Memory Card in BMP format. The saved image can then be uploaded from remote personal computer via Ethernet or Serial connection.

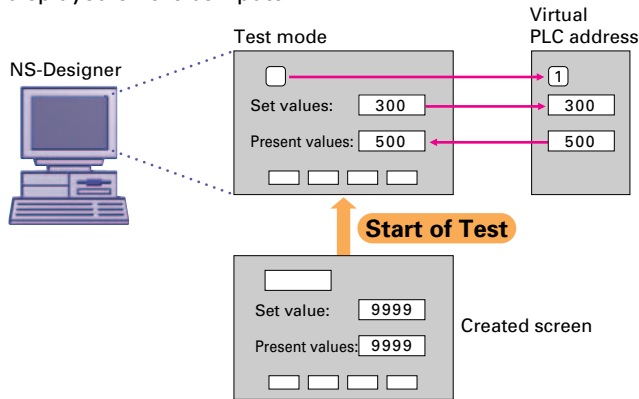
The number of images that can be saved depends on the capacity of Memory Card. As an example, about 50 images from a 640x480 display (about 600 Kbytes each) can be saved in a 30-Mbyte Memory Card.

Using a Personal Computer to Check PT Operation

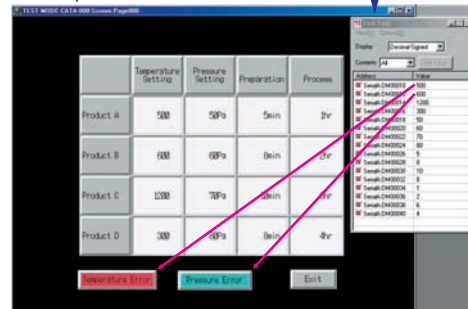
Using a Personal Computer to Check the Operation of Created Functional Objects

Simulation via the "Test Function"

When a test is started, a test screen and virtual PLC will be displayed on the computer.



Test Mode Window Virtual PLC address

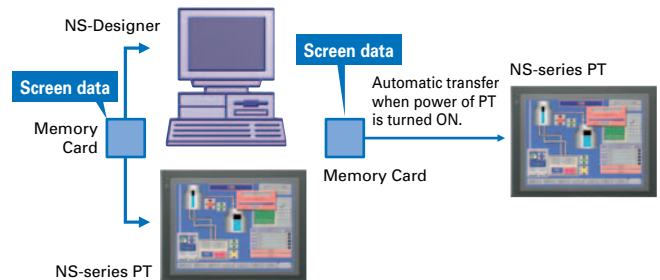


Operating (clicking with the mouse) the functional objects on the test screen will change the corresponding address in the virtual PLC. Conversely, changing the content of a virtual PLC address will change the corresponding functional objects. It is also possible to confirm pop-up screens. This function can be used to confirm the actual operation of a screen during the editing. The test function enables debugging screens without NS and PLC Hardware.

Transferring Screen Data to the PT On-site from a Memory Card

Memory Card: Upload/Download Function

It is possible to download the screen data and system program to Memory Card and upload the same data from the Memory Card. It is also possible to automatically upload the data from the Memory Card to NS-Designer or automatically download the data from Memory Card to PT when the power of PT is turned ON.



Using General Software

Setting Functional Object Properties in Excel

CSV File Input/Output

The property settings for each functional object can be exported in CSV format. The settings data can be imported again after it has been edited with a program such as Excel.

Editing Text and Bitmap File with Your Favorite Text Editor

Editor Specifying Function

The user can select the editor when editing text or bitmap files.

Creating System-related Documents

Outputting Project Information in RTF

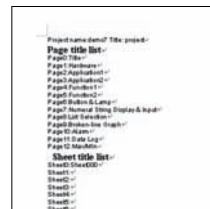
Data such as screen information and object information can be output in an RTF file. The RTF file can be read into Word Processor to produce a system manual.

Example of an RTF File Read into Word Processor

- Pasted Screen Data as RTF Data



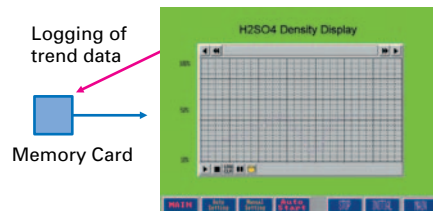
- Object Properties as RTF Data



Using Excel to Analyze Data, Such as the Alarm/Event History, Operation Log, and Error Log, and to Create Daily Reports

Memory Card: Data Logging Function

Logging data (trend data, up to 1000 points with a sampling cycle of 1 to 86,400 s/group) can be stored in the Memory Card in CSV format.



Using Excel to Analyze Time-series Data and to Create Daily Reports

Memory Card: History Storage Function

The following data can be saved to the Memory Card in CSV format.

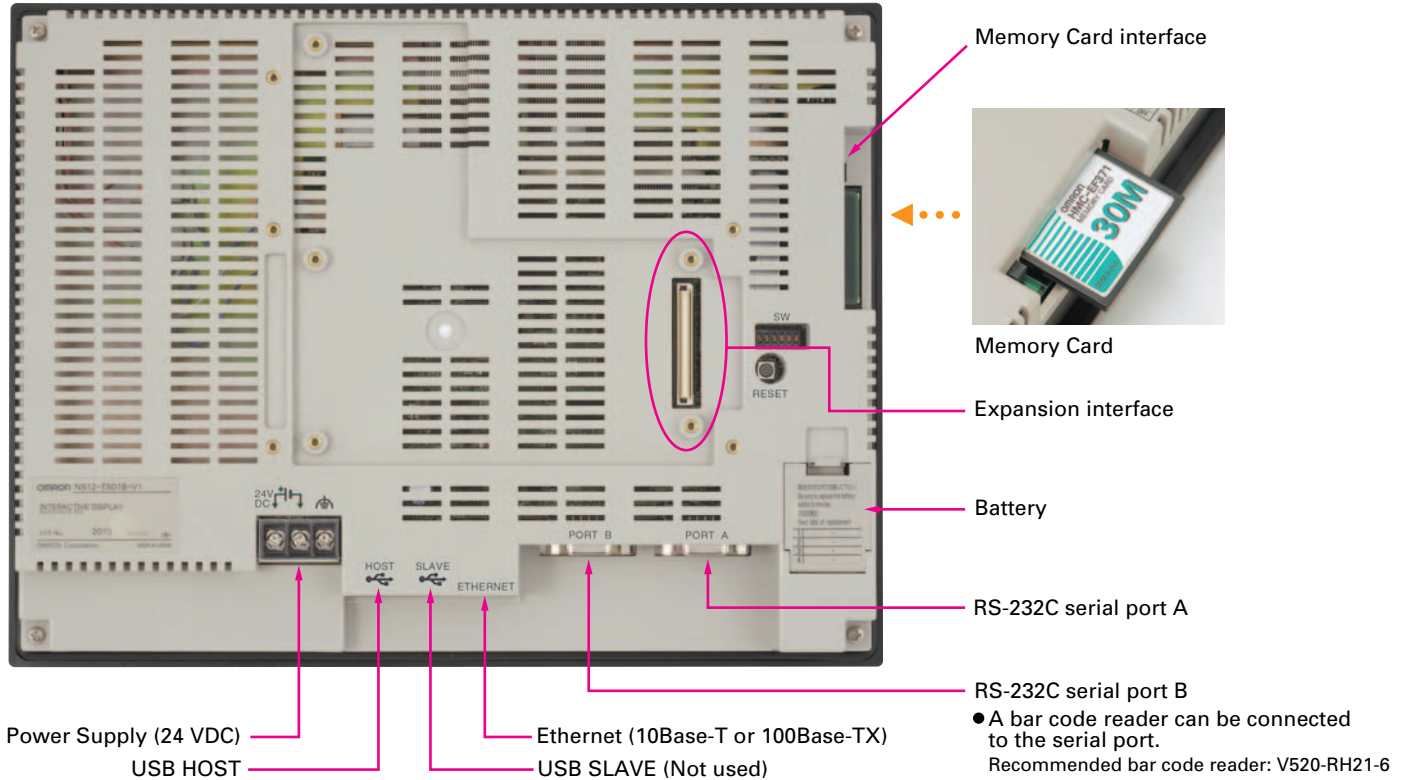
- Alarm/Event History (Alarm/ Event history data)
- Operation Log (Screen operation history data)
- Error Log (Error log data recorded during macro program execution)

High-reliability and Advanced Functions in the Industry's Slimmest PT

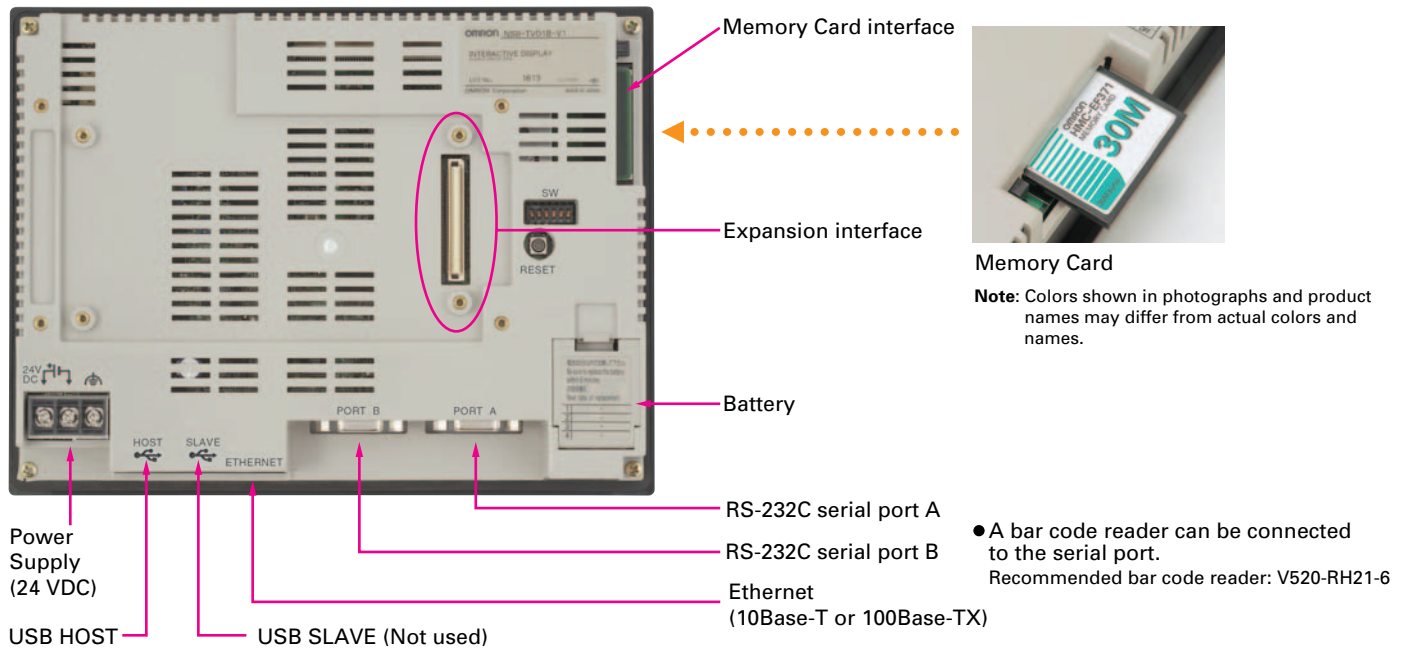
■ Super-thin 48.5-mm Body for a Slimmer Control Panel

This thin-profile model has few protrusions so it can be incorporated easily into a panel or machine. The PT can help save space when space is at a premium.

● NS12, NS10



● NS8



■ Built-in Expansion Interface

The NS-series PTs have a built-in Expansion Interface for future expandability.

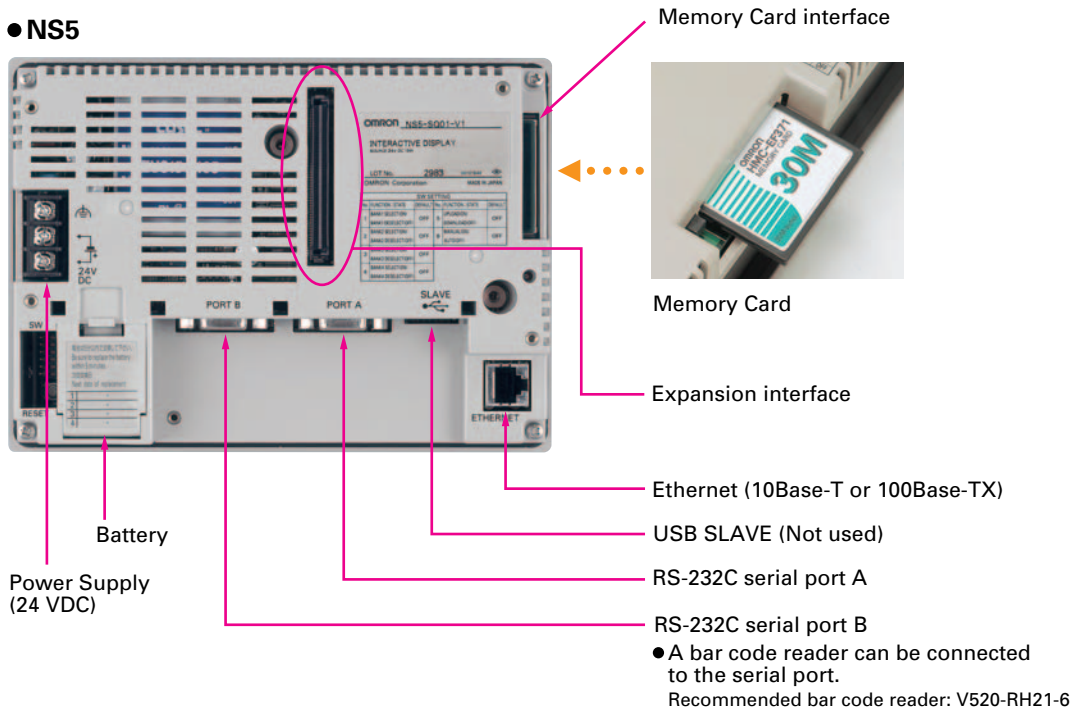
■ USB Ports

A printer can be connected to the USB HOST port. Be sure to use USB cables made by OMRON (NS-US52/NS-US22). Refer to *Printer Support* on page 10 for recommended printers.

■ NS-series PTs have backlights with the longest life expectancy in the industry.

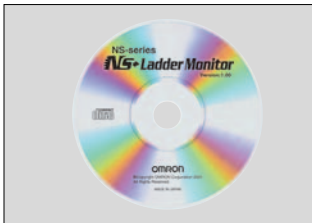
At room temperature, the average life expectancy is 50,000 hours min. for the NS12, NS10 and NS5, 40,000 hours min. for the NS8.

● NS5

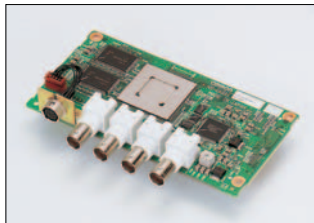


Optional Products

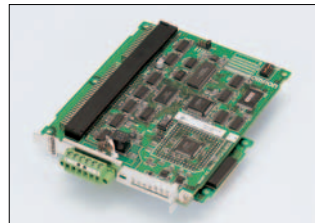
Ladder Monitor program



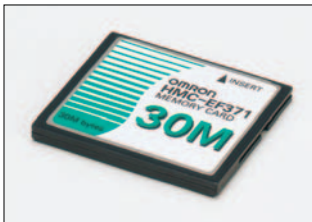
Video Input Unit (with Cover)



Controller Link Interface Unit (with Cover)



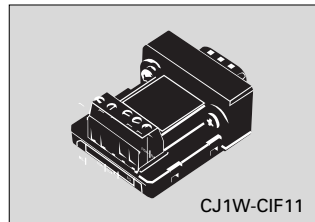
Memory Card



Memory Card Adapter



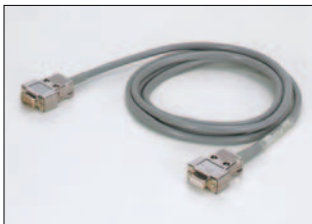
RS-422A Adapter



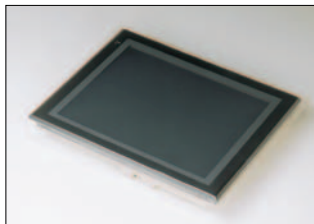
RS-232/RS-422A Conversion Unit



Communications Cable



Protective Cover/Anti-reflection Sheet for NS-series PT



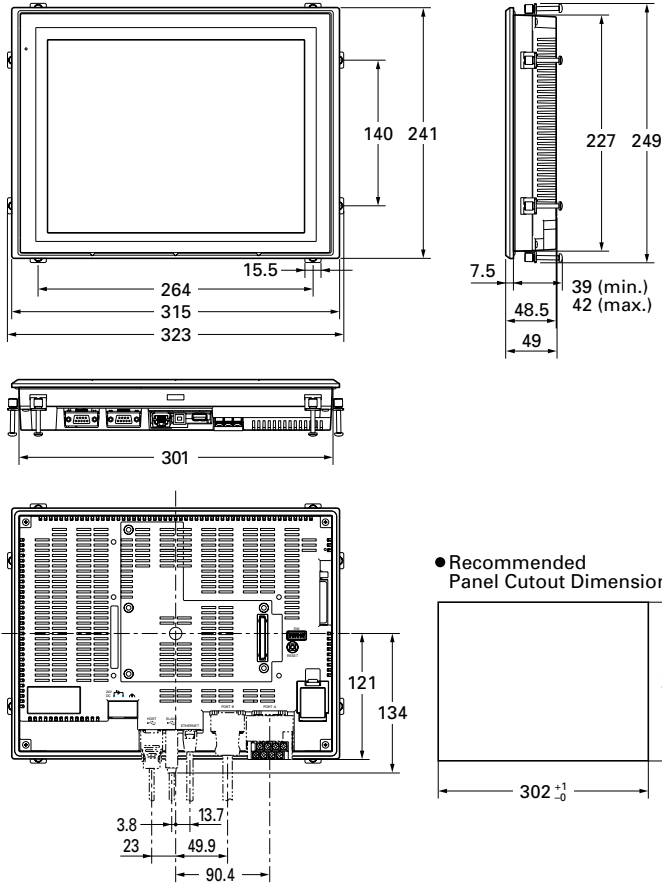
USB Serial Conversion Cable



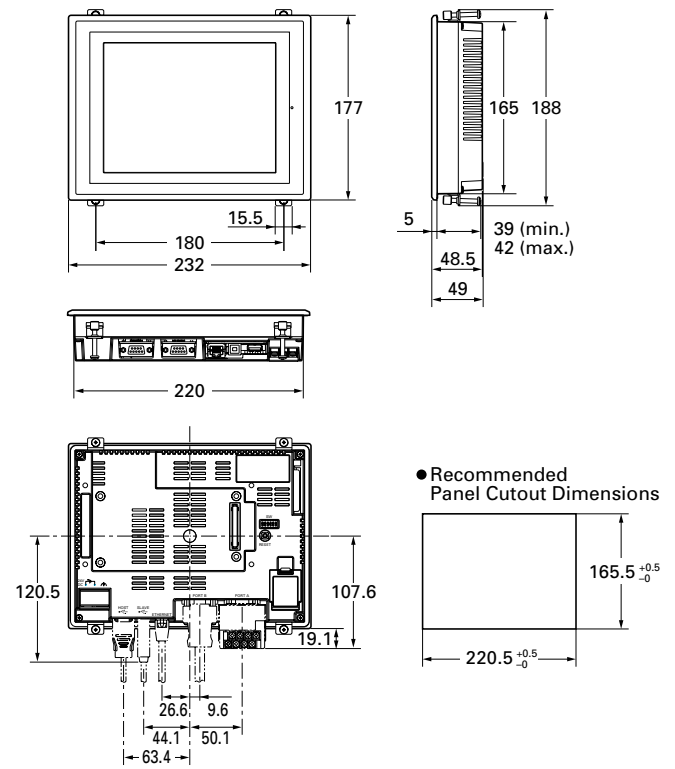
Note: Colors shown in photographs and product names may differ from actual colors and names.

Dimensions

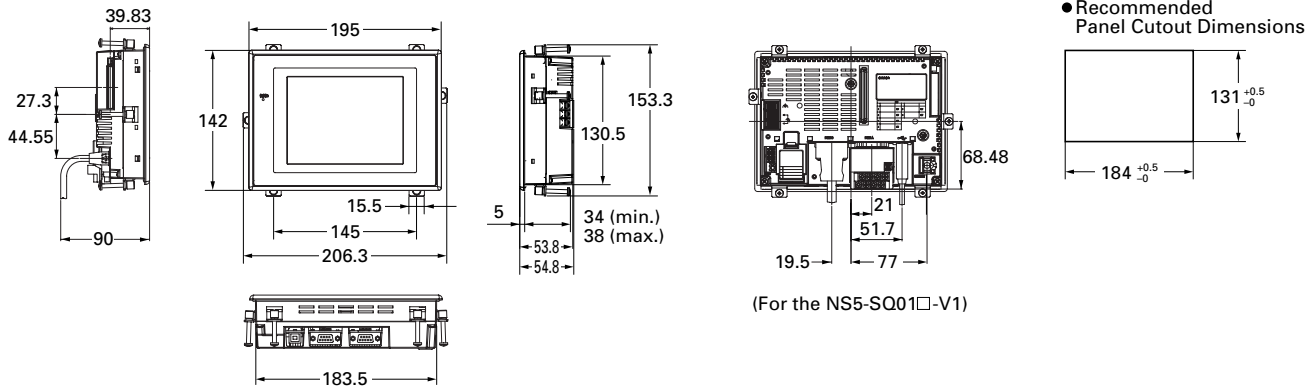
■ NS12/10 PT Units: mm



■ NS8 PT Units: mm

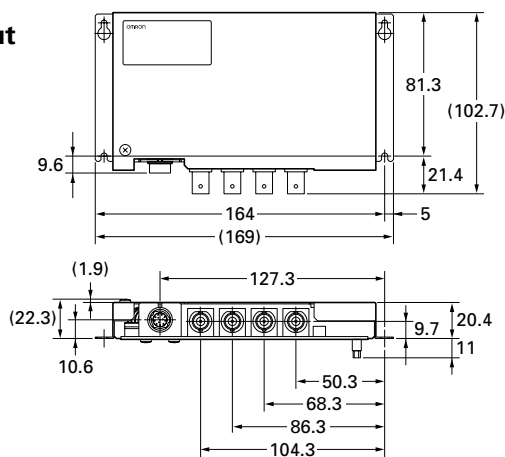


■ NS5 PT Units: mm

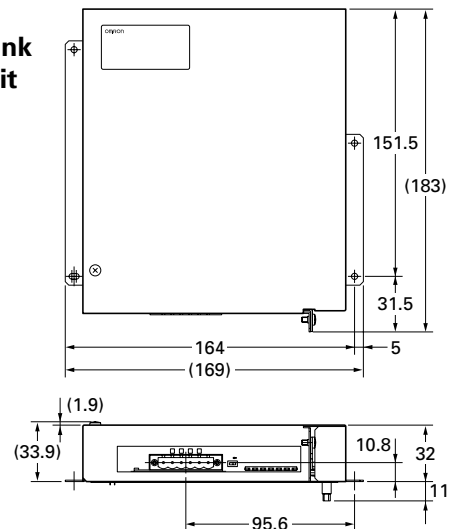


(For the NS5-SQ01□-V1)

■ NS-CA001 Video Input Unit Units: mm



■ NS-CLK21 Controller Link Interface Unit Units: mm



Performance / Specifications

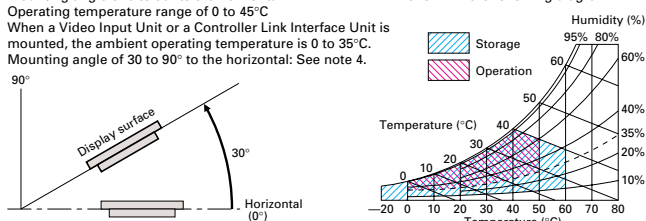
General Specifications

Item	Specifications
Rated power supply voltage	24 VDC
Allowable voltage range	20.4 to 27.6 VDC (24 VDC \pm 15 %)
Power consumption	25 W max.
Ambient operating temperature	0 to 50°C (See notes 1 and 4.)
Storage temperature	-20 to 60°C (See note 2.)
Ambient operating humidity	35% to 85% (0 to 40°C) with no condensation 35% to 60% (40 to 50°C) with no condensation
Operating environment	No corrosive gases.
Noise immunity	Conforms to IEC61000-4-4, 2 kV (power lines)
Vibration resistance (during operation)	Conforms to JIS C0040. 10 to 57 Hz, 0.075 mm amplitude, 57 to 150 Hz, 9.8 m/s ² 30 min each in X, Y, and Z directions
Shock resistance (during operation)	Conforms to JIS C0041. 147 m/s ² 3 times each in direction of X, Y, and Z.
Weight	NS12: 2.5 kg max.; NS10: 2.3 kg max.; NS8: 2.0 kg max.; NS5: 1.0 kg max.
Enclosure rating	Front operating panel: IP65F and NEMA4 compliant (See note 3.)
Battery life	5 years (at 25°C) Replace battery within 5 days after the battery runs low (indicator lights orange).
Applicable standards	cULus and EC directives

Note 1: The operating temperature is subject to the following restrictions according to the mounting angle.

Mounting angle of 0 to 30° to the horizontal:
Operating temperature range of 0 to 45°C
When a Video Input Unit or a Controller Link Interface Unit is mounted, the ambient operating temperature is 0 to 35°C.
Mounting angle of 30 to 90° to the horizontal: See note 4.

Note 2: Operate the PT within the temperature and humidity ranges shown in the following diagram.



Note 3: May not be applicable in locations with long-term exposure to oil.

Note 4: •NS12-V1/NS10-V1/NS5-V1

Mounting angle of 30° to 90° or less to the horizontal: Operating temperature range of 0 to 50°C

•NS8-V1

Mounting angle of 30° to less than 90° to the horizontal: Operating temperature range of 0 to 45°C

Mounting angle of 90° to the horizontal: Operating temperature range of 0 to 50°C

Characteristics

Display Specifications

Item	NS12-V1	NS10-V1	NS8-V1	NS5-V1	
Display panel	Display device	High-definition TFT color LCD			STN color LCD
	Number of dots	800 dot horizontal x 600 dot vertical	640 dot horizontal x 480 dot vertical	320 dot horizontal x 240 dot vertical	
	Display color	256 colors			
	Effective display area	Width 246.0 mm x height 184.5 mm (12.1 inches)	Width 215.2 mm x height 162.4 mm (10.4 inches)	Width 162.2 mm x height 121.7 mm (8 inches)	Width 117.2 mm x height 88.4 mm (5.7 inches)
Field of vision	Left/right \pm 60°, Top 45°, bottom 55°	Left/right \pm 60°, Top 35°, bottom 65°	Left/right \pm 60°, Top 50°, bottom 60°	Left/right \pm 50°, Top 30°, bottom 50°	
	Service life	50,000 hours min. (See note 1.)	40,000 hours min. (See note 1.)	50,000 hours min.	
	Brightness adjustment	There are 3 levels that can be set with the touch panel. (See note 2.)			
Backlight (See note 4.)	Backlight error detection				
	Error is detected automatically, and the RUN indicator flashes green as notification. (See note 3.)				

Note 1: This is the estimated time before brightness is reduced by half at room temperature and humidity. It is not a guaranteed value. The service life will be drastically shortened if PT is used at low temperatures. For example, using the PT at temperatures of 0°C will reduce the service life to approximately 10,000 hours (reference value).

Note 2: The brightness cannot be adjusted much.

Note 3: This function does not indicate that the service life has been reached. It detects when the backlight is not lit due to a disconnection or other errors. Backlight error detection indicates that all backlights (2) are OFF.

Note 4: Contact your nearest OMRON representative to replace the backlight.

Operating Specifications

Item	Specification		
Touch panel (Matrix type)	Method	Resistive membrane	
	Number of switches	NS12-V1	1,900 (50 horizontal x 38 vertical) 16 x 16 dots for each switch.
		NS10-V1	1,200 (40 horizontal x 30 vertical) 16 x 16 dots for each switch.
		NS8-V1	768 (32 horizontal x 24 vertical) 20 x 20 dots for each switch.
		NS5-V1	300 (20 horizontal x 15 vertical) 16 x 16 dots for each switch.
Input	Pressure-sensitive		
Service life	1,000,000 touch operations.		

Data capacity specification

Item	NS12-V1	NS10-V1	NS8-V1	NS5-V1
Standard screen data capacity	20MB		6MB	

External Interface Specifications

Item	Specifications
Memory card interface	One ATA-Compact Flash interface slot. Used to transfer and store screen data and to store history data.
Expansion interface	For Expansion Interface Units Used to install various Interface Units that are currently in development.

Communications Specifications

Serial Communications

Item	Specification
Port A	Conforms to EIA RS-232C. D-Sub female 9-pin connector 5-V output (250 mA max.) through pin 6 (See note.)
Port B	Conforms to EIA RS-232C. D-Sub female 9-pin connector 5-V output (250 mA max.) through pin 6 (See note.)

Note: The 5-V outputs of serial ports A and B cannot be used at the same time.

Controller Link (Wired-type) Specifications

Item	Specification
Baud rate	2M/1M/500K
Transmission path	Shielded twisted-pair cable (special cable)

Ethernet Specifications (NS12-TS01(B) and NS10/8-TV01(B) only)

Item	Specification
Conformance standards	Conforms to IEEE 802.3/Ethernet (10Base-T/100Base-TX).

Video Input Specifications

Item	Specification
Resolution	320 x 240, 640 x 480, or 800 x 600 dots
Input signal	NTSC composite video or PAL
Cameras	Number of cameras: 4 max.

USB Specifications

Item	Specifications
USB rating	USB1.1
Connector	Type A (Host), Type B (Slave)

Display Element Specifications

Item	Specification				
Display text	Raster font	Displayable characters	Base size		
	Font name	Rough	Alphanumeric characters or Japanese katakana	8 x 8	1 x 1, 1 x 2, 2 x 1, 2 x 2, 3 x 3, 4 x 4, 8 x 8
		Standard	Alphanumeric characters or Japanese, Chinese (Simplified, Traditional) or Korean	8 x 16 16 x 16	1 x 1, 1 x 2, 2 x 1, 2 x 2, 3 x 3, 4 x 4, 8 x 8
		Fine	Alphanumeric characters or Japanese katakana Japanese kanji	16 x 32 32 x 32	1 x 1, 1 x 2, 2 x 1, 2 x 2, 3 x 3, 4 x 4, 8 x 8
Text attributes	Vector font (text objects only)	Can be specified in NS-Designer. Font, style, and size can be specified.			
	Color	256 colors			
	Font style (only when vector font is specified)	Bold or italic			
	Vertical alignment	Top, center, or bottom			
Flicker	Horizontal alignment	Left-justified, centered, or right-justified			
	Objects that can flicker	Functional objects	Up to 10 types can be registered. The flicker speed and flicker range can be set.		
	Fixed objects	Select from 3 types. The flicker speed and flicker range are fixed.			
Numeral units and scale settings		1,000 max.			
Alarm/event settings		1000 max.			
Display colors		256 colors max.(32,000 colors for BMP)			

NS-Designer Operating Environment

Recommended CPU	Intel Celeron 400 MHz min.
Recommended memory	32 Mbytes min.
Hard disk free space	200 Mbytes are required at setup.
CD-ROM drive	Required for installation.
Display	A minimum resolution of 800 x 600 pixels is recommended.
Compatible OS	Microsoft Windows 95, Windows 98, Windows NT 4.0 (service pack 3 or higher), Windows Me, or Windows 2000 or Windows XP

Macro Processing List

Item	Contents	
Conditional judgments	IF ELSEIF ELSE ENDIF	
Conditional expressions	A == B, A > B, A >= B, A AND B, A OR B, etc.	
Basic arithmetic instructions	Assignment, addition, subtraction, multiplication, division, remainder, logical OR, logical AND, negation (NOT), logical exclusive OR, 1's complement, bit shift (left), bit shift (right), etc.	
Functions	BCD ↔ Binary conversion	Numeral (binary) → BCD
		BCD → Numeral (binary)
	Character string operations	Copy string
	Character string operations	Convert multibyte string to Unicode string.
		Convert Unicode string to multibyte string.
	Alarm/event history	Clear the alarm/event counter to 0.
	HMI (user interface) instructions	Read numeral write value or numeral change value.
		Switch screen
		Move object display area
	Message dialog box display	Get object's display shape.
		Move pop-up window screen.
		Move pop-up window screen up.
		Move pop-up window screen down.
		Move pop-up window screen left.
		Move pop-up window screen right.
	Communications	Read data from the specified address.
		Write data to the specified address.
Exit processing	Exit macro program.	

Note: Macro execution conditions:

- Registration to the project when the project is loaded, alarm/event goes ON, or alarm event goes OFF.
- Registration to screen when screen is loaded or unloaded.
- Registration to functional object when an object is touched to turn it ON, a value is changed, just before Numeral or String Input start, just before Numeral or String Input write, list selection, etc.

Compatible OMRON PLCs

■ CPU Units (1:1 NT Link Connection)

Model number	Specifications	PLC model name
CQM1-CPU41-V1/CPU42-V1/CPU43-V1/CPU44-V1	With RS-232C connector (9-pin type)	C-series CQM1
CQM1H-CPU21/CPU51/CPU61		C-series CQM1H
CPM1-10/20CDR-□+ CPM1-CIF01	Connect to peripheral port.	C-series CPM1
CPM1A-10/20/30/40CD□-□+ CPM1-CIF01		C-series CPM1A
CPM2A-30/40/60CD□□-□+ CPM1-CIF01	Connect to RS-232C or peripheral port.	C-series CPM2A
CPM2C-10/20□□□□□□-□ (See note 1)	With RS-232C connector (9-pin type)	C-series CPM2C
C200HS-CPU21/CPU23/CPU31/CPU33		C-series C200HS
C200HE-CPU32(-Z) (See note 2) / CPU42(-Z)		C-series C200HE (-Z)
C200HG-CPU33(-Z) (See note 2) / CPU43(-Z) / CPU53(-Z) (See note 2) / CPU63(-Z)		C-series C200HG (-Z)
C200HX-CPU34(-Z) (See note 2) / CPU44(-Z) / CPU54(-Z) (See note 2) / CPU64(-Z) / CPU65-Z / CPU85-Z		C-series C200HX (-Z)
CV500/1000/2000-CPU01-V1 CVM1-CPU01-V2/CPU11-V2/CPU21-V2	With RS-232C connector (switching/9-pin type)	CVM1/CV-series CVM1 or CV500/ CV1000/CV2000

Note 1: Use an Adapter Cable (CPM2C-CN111 or CS1W-CN114/118), CPM1-CIF01 RS-232C Adapter, or CPM1-CIF11 RS-422A Adapter to connect.
Note 2: A C200HW-COM02(-V1), C200HW-COM04(-V1), C200HW-COM05(-V1), or C200HW-COM06(-V1) Communications Board is required.

■ CPU Units (1:N NT Link Connection)

Model number	Specifications	PLC model name
CS1G-CPU42H/CPU43H/CPU44H/CPU45H	With RS-232C connector (9-pin type)	CS-series CS1G
CS1H-CPU63H/CPU64H/CPU65H/CPU66H/CPU67H		CS-series CS1H
CS1D-CPU65H/CPU67H		CS-series CS1D
CJ1G-CPU42H/CPU43H/CPU44H/CPU45H (See note 1)		CJ-series CJ1G
CJ1H-CPU65H/CPU66H (See note 1)		CJ-series CJ1H
CJ1M-CPU12/CPU13/CPU22/CPU23/CPU11/CPU21 (See note 1)		CJ-series CJ1M
CQM1H-CPU61/51 with a CQM1H-SCB41 Serial Communications Board		C-series CQM1H
C200HE-CPU32(-Z) (See note 2) / CPU42(-Z)		C-series C200HE(-Z)
C200HG-CPU33(-Z) (See note 2) / CPU43(-Z) / CPU53(-Z) (See note 2) / CPU63(-Z)		C-series C200HG(-Z)
C200HX-CPU34(-Z) (See note 2) / CPU44(-Z) / CPU54(-Z) (See note 2) / CPU64(-Z) / CPU65-Z / CPU85-Z		C-series C200HX(-Z)

Note 1: The CJ1W-SCU41 Serial Communications Unit can also be connected.
Note 2: A C200HW-COM02/COM04/COM05/COM06(-V1) Communications Board is required.

Standard Models

Model name	Specifications		Model number	
	Ethernet	Case color		
NS12	12-inch TFT 800 x 600 dots	No	Ivory	NS12-TS00-V1
			Black	NS12-TS00B-V1
		Yes	Ivory	NS12-TS01-V1
			Black	NS12-TS01B-V1
NS10	10-inch TFT 640 x 480 dots	No	Ivory	NS10-TV00-V1
			Black	NS10-TV00B-V1
		Yes	Ivory	NS10-TV01-V1
			Black	NS10-TV01B-V1
NS8	8-inch TFT 640 x 480 dots	No	Ivory	NS8-TV00-V1
			Black	NS8-TV00B-V1
		Yes	Ivory	NS8-TV01-V1
			Black	NS8-TV01B-V1
NS5	5-inch STN 320 x 240 dots	No	Ivory	NS5-SQ00-V1
			Black	NS5-SQ00B-V1
		Yes	Ivory	NS5-SQ01-V1
			Black	NS5-SQ01B-V1
NS-Designer Screen design software	Windows version on CD-ROM		NS-NSDC1-V5	
Cable (See note 1.)	Screen transfer cable for DOS/V		XW2Z-S002	
	USB Host Cable, cable length: 5 m		NS-US52 (5 m)	
	USB Host Cable, cable length: 2 m		NS-US22 (2 m)	
	USB-RS-232-C Conversion Cable, cable length: 0.5 m		CS1W-CIF31	
PT-to-PLC Connecting Cable	PT connection: 9 pins PLC connection: 9 pins	Length: 2 m	XW2Z-200T	
		Length: 5 m	XW2Z-500T	
Accessories	Ladder Monitor Software	One CD-ROM Ladder Monitor application (See note 2.) and I/O Comment File Extraction Tool (See note 3.) A Memory Card (sold separately) is required to use the software in the NS-series PT. An HMC-AP001 Memory Card Adapter is required in order to copy the data from the CD-ROM in the computer to the Memory Card.	NS-EXT01-V2	
			NS-EXT01-V2L03 (3 licenses)	
			NS-EXT01-V2L10 (10 licenses)	
			NS-EXT01-V2HMC (with 64-Mbyte Memory Card)	

■ Superior environmental resistance meets IP65F standards.

Flush surface construction is used for superior environmental resistance and the enclosure rating for the front of the PT is IP65F compliant.

IP → International Protection

6 → Dust and dirt will not enter interior.

(Enclosure protects against foreign objects.)

5 → There are no adverse effects from a water stream from any direction.

(Enclosure protects against water intrusion.)

F → There are no harmful effects from oil droplets or spray from any direction. (Enclosure protects against oil intrusion.)

Note: May not be applicable in environments with long-term exposure to water or oil.

Model name	Specifications		Model number
Accessories	Video Input Unit	Inputs: 4 channels Signal type: NTSC/PAL	NS-CA001
			Special Cable for the Console
	F150-VKP (5m)		
	Controller Link Interface Unit	For Controller Link Communications	NS-CLK21
	RS-422A Adapter	Transmission distance: 500 m total length	NS-AL002 (See note 4.)
		Transmission distance: 50 m total length	CJ1W-CIF11 (See note 5.)
	Anti-reflection Sheets (5 surface sheets)	NS12/10	NS12-KBA04
		NS8	NS7-KBA04
		NS5	NT30-KBA04
	Protective Covers (5 pack)	NS12/10	NS12-KBA05
		NS8	NS7-KBA05
		NS5	NT31C-KBA05
	Attachment (NT631Series → NS12/10 Series)		NS12-ATT01
	Memory Card	15 MB	HMC-EF172
		30 MB	HMC-EF372
		64 MB	HMC-EF672
	Memory Card Adapter		HMC-AP001
Battery		CJ1W-BAT01	
Bar Code Reader (Refer to the Catalog for details.)		V520-RH21-6	

- Note 1:** Be sure to use cables made by OMRON when connecting NS hardware to a printer.
Note 2: NS-series PT application used to monitor a SYSMAC CS/CJ-series PLC's ladder program from the PT.
Note 3: This tool extracts I/O comment data from the CX-Programmer's CXT file and converts the data to a format that can be used by the Ladder Monitor Software for NS.
Note 4: This model is available for NS Hardware without "-V1" suffix.
Note 5: This model is available for NS Hardware with "-V1" suffix only.
 Be sure to use NS-AL002 when connecting to NS Hardware without "-V1" suffix.
Note 6: A Chemical Resistant Cover (NT30-KBA01) is also available for the NS5.

■ Meets International Standards and Exports are Not Restricted

The PTs conform to UL standards (cULus) and EC Directives.

In addition, there are no export restrictions on the PTs.



WS02-NSFC1-E Face Plate Auto-Builder for NS

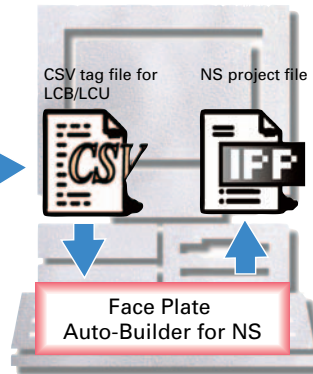
Significantly reduces the engineering time required by combining LCB/LCU and the NS Series.

- Automatic generation of control screens and tuning screens. Automatic generation of NS screen data by the software from tag information created with CX-Process Tool.
- NS communications address allocation, ladder programs, etc., are completely unnecessary.
- Data that has been generated can be freely edited and processed by NS-Designer (NS screen creation software).



CX-Process Tool
(LCB/LCU programming software)

- LCB/LCU program creation (function block method)
- CSV tag file output



SYSMAC CS1 + LCB/LCU



NS Series

Created screens are easily transferred to the NS by means of a Memory Card or over the network.



NS-Designer
(NS screen creation software)

- Editing created data
- Creation of other required screens



■ Specifications

Product name	Specifications	Model number
Face Plate Auto-Builder for NS	CSV tag files for LCB/LCU used in Face Plate Auto-Builder for NS	WS02-NSFC1-E

Read and Understand this Catalog

Please read and understand this catalog before purchasing the product. Please consult your OMRON representative if you have any questions or comments.

Warranty and Limitations of Liability

WARRANTY

OMRON's exclusive warranty is that the products are free from defects in materials and workmanship for a period of one year (or other period if specified) from date of sale by OMRON.

OMRON MAKES NO WARRANTY OR REPRESENTATION, EXPRESS OR IMPLIED, REGARDING NON-INFRINGEMENT, MERCHANTABILITY, OR FITNESS FOR PARTICULAR PURPOSE OF THE PRODUCTS. ANY BUYER OR USER ACKNOWLEDGES THAT THE BUYER OR USER ALONE HAS DETERMINED THAT THE PRODUCTS WILL SUITABLY MEET THE REQUIREMENTS OF THEIR INTENDED USE. OMRON DISCLAIMS ALL OTHER WARRANTIES, EXPRESS OR IMPLIED.

LIMITATIONS OF LIABILITY

OMRON SHALL NOT BE RESPONSIBLE FOR SPECIAL, INDIRECT, OR CONSEQUENTIAL DAMAGES, LOSS OF PROFITS OR COMMERCIAL LOSS IN ANY WAY CONNECTED WITH THE PRODUCTS, WHETHER SUCH CLAIM IS BASED ON CONTRACT, WARRANTY, NEGLIGENCE, OR STRICT LIABILITY.

In no event shall the responsibility of OMRON for any act exceed the individual price of the product on which liability is asserted.

IN NO EVENT SHALL OMRON BE RESPONSIBLE FOR WARRANTY, REPAIR, OR OTHER CLAIMS REGARDING THE PRODUCTS UNLESS OMRON'S ANALYSIS CONFIRMS THAT THE PRODUCTS WERE PROPERLY HANDLED, STORED, INSTALLED, AND MAINTAINED AND NOT SUBJECT TO CONTAMINATION, ABUSE, MISUSE, OR INAPPROPRIATE MODIFICATION OR REPAIR.

Application Considerations

SUITABILITY FOR USE

OMRON shall not be responsible for conformity with any standards, codes, or regulations that apply to the combination of the product in the customer's application or use of the product.

Take all necessary steps to determine the suitability of the product for the systems, machines, and equipment with which it will be used.

Know and observe all prohibitions of use applicable to this product.

NEVER USE THE PRODUCT FOR AN APPLICATION INVOLVING SERIOUS RISK TO LIFE OR PROPERTY WITHOUT ENSURING THAT THE SYSTEM AS A WHOLE HAS BEEN DESIGNED TO ADDRESS THE RISKS, AND THAT THE OMRON PRODUCT IS PROPERLY RATED AND INSTALLED FOR THE INTENDED USE WITHIN THE OVERALL EQUIPMENT OR SYSTEM.

PROGRAMMABLE PRODUCTS

OMRON shall not be responsible for the user's programming of a programmable product, or any consequence thereof.

Disclaimers

CHANGE IN SPECIFICATIONS

Product specifications and accessories may be changed at any time based on improvements and other reasons. Consult with your OMRON representative at any time to confirm actual specifications of purchased product.

DIMENSIONS AND WEIGHTS

Dimensions and weights are nominal and are not to be used for manufacturing purposes, even when tolerances are shown.

PERFORMANCE DATA

Performance data given in this catalog is provided as a guide for the user in determining suitability and does not constitute a warranty. It may represent the result of OMRON's test conditions, and the users must correlate it to actual application requirements. Actual performance is subject to the OMRON Warranty and Limitations of Liability.

Certain Terms and Conditions of Sale

- Offer; Acceptance.** These terms and conditions (these "Terms") are deemed part of all catalogs, manuals or other documents, whether electronic or in writing, relating to the sale of goods or services (collectively, the "Goods") by Omron Electronics LLC and its subsidiary companies ("Seller"). Seller hereby objects to any terms or conditions proposed in Buyer's purchase order or other documents which are inconsistent with, or in addition to, these Terms. Please contact your Omron representative to confirm any additional terms for sales from your Omron company.
- Prices.** All prices stated are current, subject to change without notice by Seller. Buyer agrees to pay the price in effect at time of shipment.
- Discounts.** Cash discounts, if any, will apply only on the net amount of invoices sent to Buyer after deducting transportation charges, taxes and duties, and will be allowed only if (i) the invoice is paid according to Seller's payment terms and (ii) Buyer has no past due amounts owing to Seller.
- Orders.** Seller will accept no order less than \$200 net billing.
- Governmental Approvals.** Buyer shall be responsible for, and shall bear all costs involved in, obtaining any government approvals required for the importation or sale of the Goods.
- Taxes.** All taxes, duties and other governmental charges (other than general real property and income taxes), including any interest or penalties thereon, imposed directly or indirectly on Seller or required to be collected directly or indirectly by Seller for the manufacture, production, sale, delivery, importation, consumption or use of the Goods sold hereunder (including customs duties and sales, excise, use, turnover and license taxes) shall be charged to and remitted by Buyer to Seller.
- Financial.** If the financial position of Buyer at any time becomes unsatisfactory to Seller, Seller reserves the right to stop shipments or require satisfactory security or payment in advance. If Buyer fails to make payment or otherwise comply with these Terms or any related agreement, Seller may (without liability and in addition to other remedies) cancel any unshipped portion of Goods sold hereunder and stop any Goods in transit until Buyer pays all amounts, including amounts payable hereunder, whether or not then due, which are owing to it by Buyer. Buyer shall in any event remain liable for all unpaid accounts.
- Cancellation; Etc.** Orders are not subject to rescheduling or cancellation unless Buyer indemnifies Seller fully against all costs or expenses arising in connection therewith.
- Force Majeure.** Seller shall not be liable for any delay or failure in delivery resulting from causes beyond its control, including earthquakes, fires, floods, strikes or other labor disputes, shortage of labor or materials, accidents to machinery, acts of sabotage, riots, delay in or lack of transportation or the requirements of any government authority.
- Shipping; Delivery.** Unless otherwise expressly agreed in writing by Seller:
 - Shipments shall be by a carrier selected by Seller;
 - Such carrier shall act as the agent of Buyer and delivery to such carrier shall constitute delivery to Buyer;
 - All sales and shipments of Goods shall be FOB shipping point (unless otherwise stated in writing by Seller), at which point title to and all risk of loss of the Goods shall pass from Seller to Buyer, provided that Seller shall retain a security interest in the Goods until the full purchase price is paid by Buyer;
 - Delivery and shipping dates are estimates only.
 - Seller will package Goods as it deems proper for protection against normal handling and extra charges apply to special conditions.
- Claims.** Any claim by Buyer against Seller for shortage or damage to the Goods occurring before delivery to the carrier must be presented in writing to Seller within 30 days of receipt of shipment and include the original transportation bill signed by the carrier noting that the carrier received the Goods from Seller in the condition claimed.
- Warranties.** (a) **Exclusive Warranty.** Seller's exclusive warranty is that the Goods will be free from defects in materials and workmanship for a period of twelve months from the date of sale by Seller (or such other period expressed in writing by Seller). Seller disclaims all other warranties, express or implied. (b) **Limitations.** SELLER MAKES NO WARRANTY OR REPRESENTATION, EXPRESS OR IMPLIED, ABOUT NON-INFRINGEMENT, MERCHANTABILITY OR FITNESS FOR A PARTICULAR PURPOSE OF THE GOODS. BUYER ACKNOWLEDGES THAT IT ALONE HAS DETERMINED THAT THE GOODS WILL SUITABLY MEET THE REQUIREMENTS OF THEIR INTENDED USE. Seller further disclaims all warranties and responsibility of any type for claims or expenses based on infringement by the Goods or otherwise of any intellectual property right. (c) **Buyer Remedy.** Seller's sole obligation hereunder shall be to replace (in the form originally shipped with Buyer responsible for labor charges for removal or replacement thereof) the non-complying Good or, at Seller's election, to repay or credit Buyer an amount equal to the purchase price of the Good; provided that in no event shall Seller be responsible for warranty, repair, indemnity or any other claims or expenses regarding the Goods unless Seller's analysis confirms that the Goods were properly handled, stored, installed and maintained and not subject to contamination, abuse, misuse or inappropriate modification. Return of any goods by Buyer must be approved in writing by Seller before shipment. Seller shall not be liable for the suitability or unsuitability or the results from the use of Goods in combination with any electrical or electronic components, circuits, system assemblies or any other materials or substances or environments. Any advice, recommendations or information given orally or in writing, are not to be construed as an amendment or addition to the above warranty.
- Damage Limits; Etc.** SELLER SHALL NOT BE LIABLE FOR SPECIAL, INDIRECT OR CONSEQUENTIAL DAMAGES, LOSS OF PROFITS OR PRODUCTION OR COMMERCIAL LOSS IN ANY WAY CONNECTED WITH THE GOODS, WHETHER SUCH CLAIM IS BASED IN CONTRACT, WARRANTY, NEGLIGENCE OR STRICT LIABILITY. Further, in no event shall liability of Seller exceed the individual price of the Good on which liability is asserted.
- Indemnities.** Buyer shall indemnify and hold harmless Seller, its affiliates and its employees from and against all liabilities, losses, claims, costs and expenses (including attorney's fees and expenses) related to any claim, investigation, litigation or proceeding (whether or not Seller is a party) which arises or is alleged to arise from Buyer's acts or omissions under these Terms or in any way with respect to the Goods. Without limiting the foregoing, Buyer (at its own expense) shall indemnify and hold harmless Seller and defend or settle any action brought against Seller to the extent that it is based on a claim that any Good made to Buyer specifications infringed intellectual property rights of another party.
- Property; Confidentiality.** The intellectual property embodied in the Goods is the exclusive property of Seller and its affiliates and Buyer shall not attempt to duplicate it in any way without the written permission of Seller. Notwithstanding any charges to Buyer for engineering or tooling, all engineering and tooling shall remain the exclusive property of Seller. All information and materials supplied by Seller to Buyer relating to the Goods are confidential and proprietary, and Buyer shall limit distribution thereof to its trusted employees and strictly prevent disclosure to any third party.
- Miscellaneous.** (a) **Waiver.** No failure or delay by Seller in exercising any right and no course of dealing between Buyer and Seller shall operate as a waiver of rights by Seller. (b) **Assignment.** Buyer may not assign its rights hereunder without Seller's written consent. (c) **Amendment.** These Terms constitute the entire agreement between Buyer and Seller relating to the Goods, and no provision may be changed or waived unless in writing signed by the parties. (d) **Severability.** If any provision hereof is rendered ineffective or invalid, such provision shall not invalidate any other provision. (e) **Setoff.** Buyer shall have no right to set off any amounts against the amount owing in respect of this invoice. (f) As used herein, "including" means "including without limitation".

Certain Precautions on Specifications and Use

- Suitability of Use.** Seller shall not be responsible for conformity with any standards, codes or regulations which apply to the combination of the Good in the Buyer's application or use of the Good. At Buyer's request, Seller will provide applicable third party certification documents identifying ratings and limitations of use which apply to the Good. This information by itself is not sufficient for a complete determination of the suitability of the Good in combination with the end product, machine, system, or other application or use. The following are some examples of applications for which particular attention must be given. This is not intended to be an exhaustive list of all possible uses of this Good, nor is it intended to imply that the uses listed may be suitable for this Good:
 - Outdoor use, uses involving potential chemical contamination or electrical interference, or conditions or uses not described in this document.
 - Energy control systems, combustion systems, railroad systems, aviation systems, medical equipment, amusement machines, vehicles, safety equipment, and installations subject to separate industry or government regulations.
 - Systems, machines and equipment that could present a risk to life or property. Please know and observe all prohibitions of use applicable to this Good.NEVER USE THE PRODUCT FOR AN APPLICATION INVOLVING SERIOUS RISK TO LIFE OR PROPERTY WITHOUT ENSURING THAT THE SYSTEM AS A WHOLE HAS BEEN DESIGNED TO ADDRESS THE RISKS, AND THAT THE SELLER'S PRODUCT IS PROPERLY RATED AND INSTALLED FOR THE INTENDED USE WITHIN THE OVERALL EQUIPMENT OR SYSTEM.
- Programmable Products.** Seller shall not be responsible for the user's programming of a programmable Good, or any consequence thereof.
- Performance Data.** Performance data given in this catalog is provided as a guide for the user in determining suitability and does not constitute a warranty. It may represent the result of Seller's test conditions, and the user must correlate it to actual application requirements. Actual performance is subject to the Seller's Warranty and Limitations of Liability.
- Change in Specifications.** Product specifications and accessories may be changed at any time based on improvements and other reasons. It is our practice to change part numbers when published ratings or features are changed, or when significant construction changes are made. However, some specifications of the Good may be changed without any notice. When in doubt, special part numbers may be assigned to fix or establish key specifications for your application. Please consult with your Seller's representative at any time to confirm actual specifications of purchased Good.
- Errors and Omissions.** The information in this catalog has been carefully checked and is believed to be accurate; however, no responsibility is assumed for clerical, typographical or proofreading errors, or omissions.



OMRON ELECTRONICS LLC

1 Commerce Drive
Schaumburg, IL 60173
847.843.7900
For US technical support or
other inquiries: 800.556.6766

OMRON CANADA, INC.

885 Milner Avenue
Toronto, Ontario M1B 5V8
416.286.6465

OMRON ON-LINE

Global - <http://www.omron.com>
USA - <http://www.omron.com/oei>
Canada - <http://www.omron.ca>

UNITED STATES

To locate a Regional Sales Office, local Distributor or
to obtain product information, call: 847.843.7900

CANADA REGIONAL SALES OFFICES

Ontario	Toronto	416.286.6465
	Kitchener	519.896.1144
	Kingston	613.376.3968
Quebec	Montreal	514.636.6676
British Columbia	Vancouver	604.522.8855
Alberta	Edmonton	403.440.0818
	Calgary	403.257.3095

BRAZIL SALES OFFICE

Sao Paulo 55.11.5564.6488

ARGENTINA SALES OFFICE

Cono Sur 54.114.787.1129

MEXICO SALES OFFICES

Florida 954.227.2121 **Ciudad Juarez** 656.623.7083
Mexico, D.F. 555.534.1195 **Monterrey, N.L.** 818.377.4281